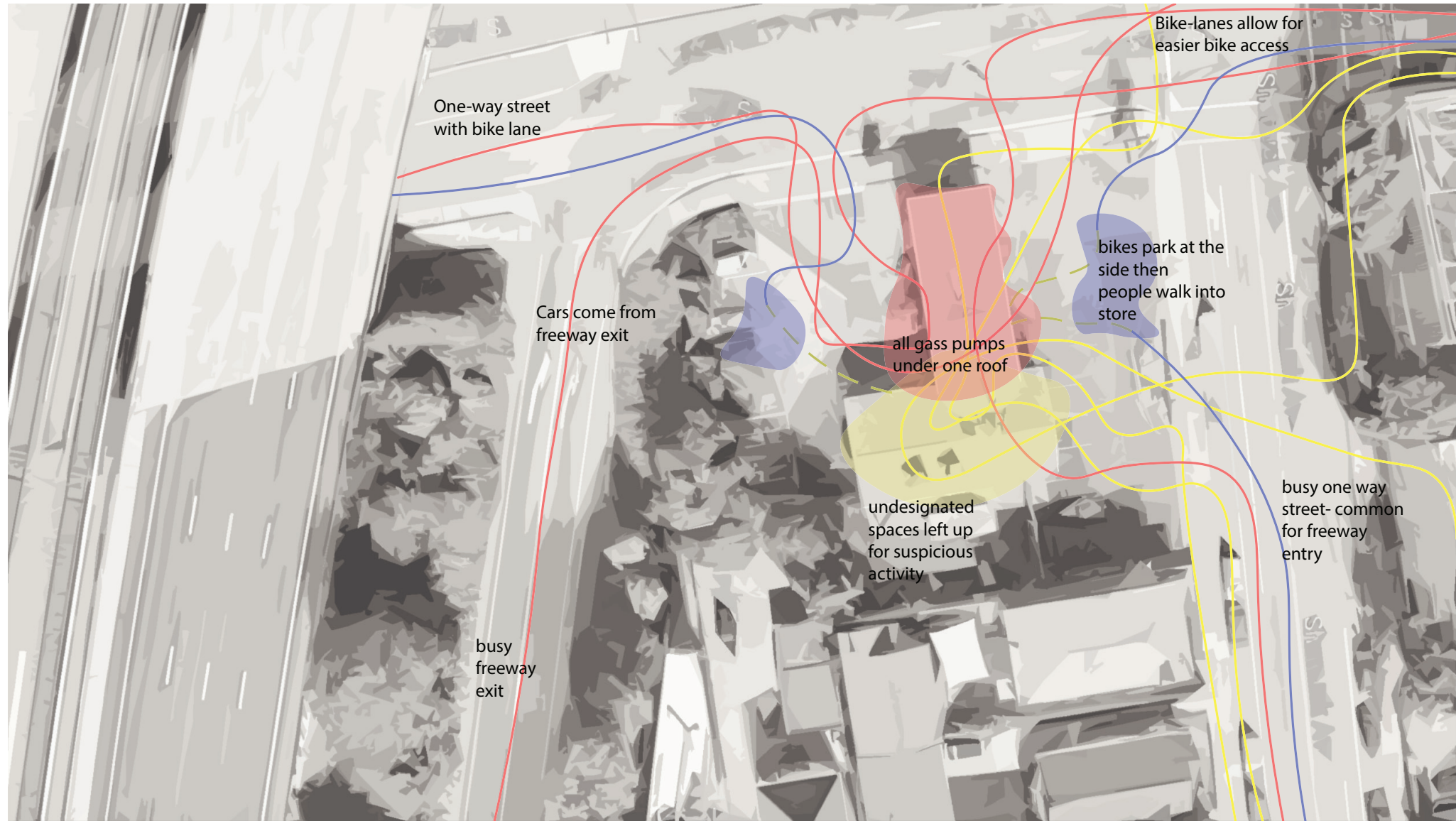


# 500-ish WORDS

Maya Yaropa

*The state of our world has been drastically uprooted in front of all of our eyes, and through adjusting to a new lifestyle we've been forced to reevaluate our current society, seeing just how crucial or irrelevant some practices are. As a collective society, it is up to us to come out of this experience with stronger intentions to for a better world for future generations. One of the largest changes we've been faced with is being restricted from travel. Travel is important because it opens people's minds to new ways of life and exposes them to the beauty this earth has to offer. One practice that's exposed itself as far less demanding as society believes them to be, are gas stations. Through rebranding gas stations to take the focus off of petroleum and redirecting it towards simply 'recharging', we can start to eliminate excessive fossil fuel usage, and engage in more earth-healthy means of transportation. By combining gas and electric car charging at the same location as a small coffee shop and city bike stations, people begin to interact with each other more. When more means of transportation are considered as prevalent as driving petroleum run vehicles, theres less demand for that unnecessary element. These new charging stations are designed in a way that encourage and enhance the experience of refueling in the healthiest way we can. The roof-top garden located on top of the cafe supports longer visits and gives another purpose to come to the station. Collages 1 and 2 included here represent society's idea of gas stations currently, how they are creepy, undesirable and facilitate a lot of suspicious behavior. Collages 3 and 4 are what I hope these new re-charge stations will make people feel; excitement and curiosity, eagerness to travel, engage with one another, all doing so while reducing fossil fuel emissions.*



spacial diagram



Collage 0



collage 1



collage 2

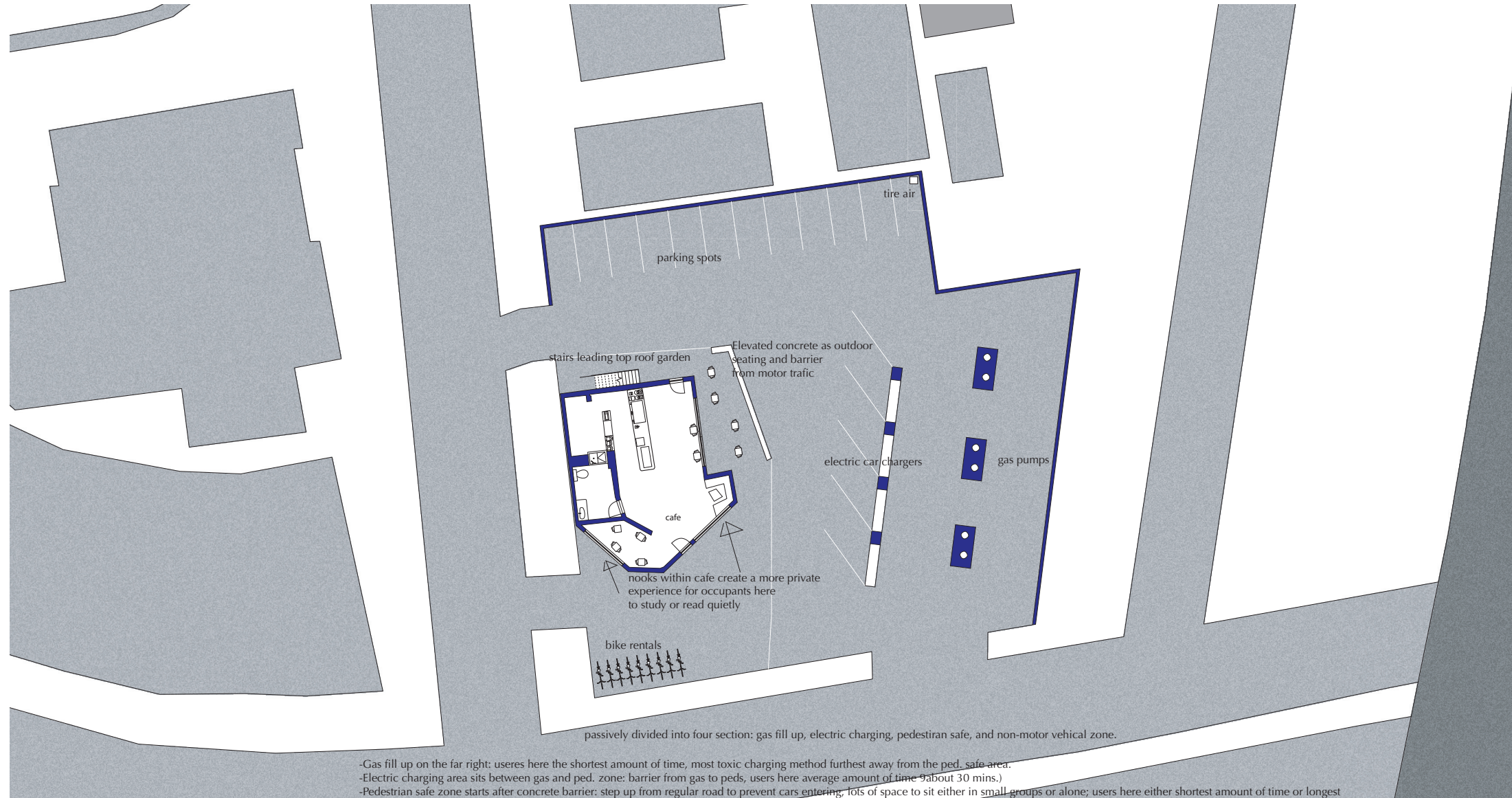


collage 3



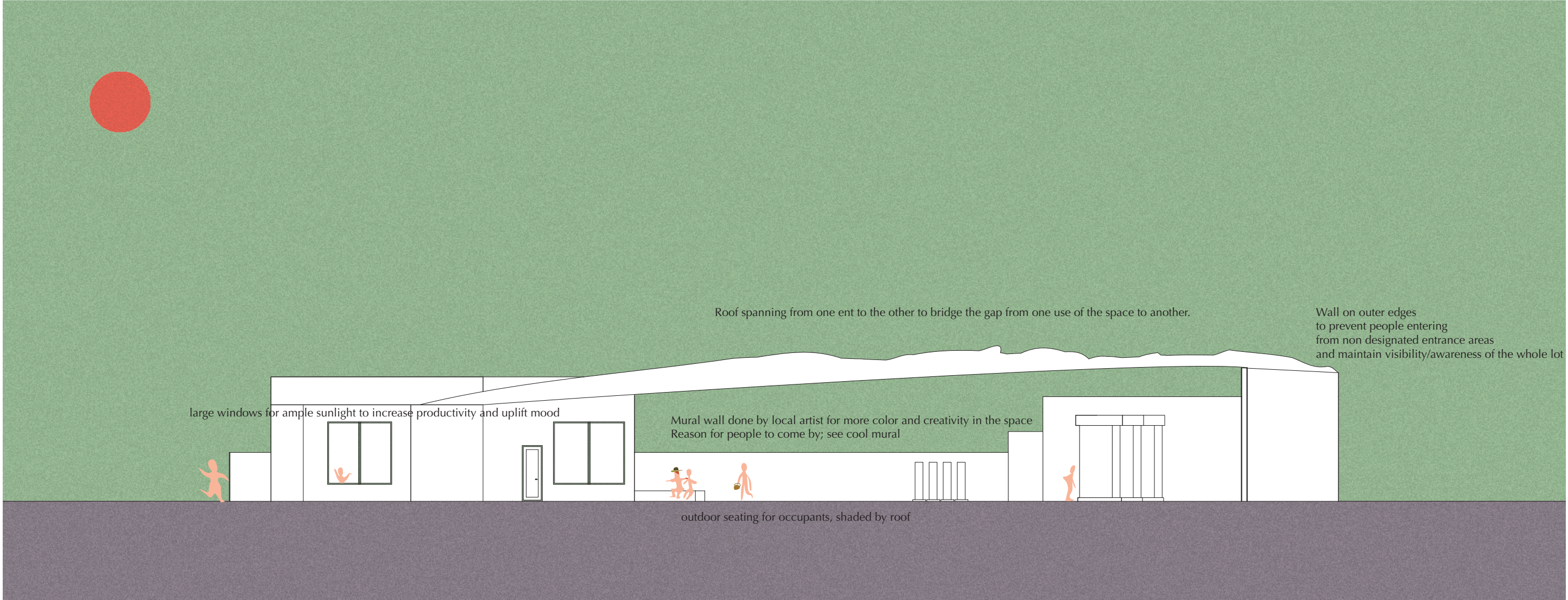
collage 4

plan- ground level



plan- roof level





large windows for ample sunlight to increase productivity and uplift mood

Roof spanning from one end to the other to bridge the gap from one use of the space to another.

Wall on outer edges to prevent people entering from non designated entrance areas and maintain visibility/awareness of the whole lot

Mural wall done by local artist for more color and creativity in the space  
Reason for people to come by; see cool mural

outdoor seating for occupants, shaded by roof

elevation





perspective