



URBAN SOLUTIONS

In time of pandemic it is up to the ARCHITECT to stand up and take a stance in an attempt to help those affected and transform the world from then on. Urban Solutions takes a stance on this by introducing a new standard of living that will transform how we as people live within the home by attempting to bring our normal aspects of life and condense them within the home. This is meant to bring back routine into our lives during times where routine seems to disintegrate. Open courtyards and open air environments force people to dress in the morning as well as add the need for maintenance that has been lost elsewhere. Rooms are divided based on program and level to have them better represent the spaces they symbolize. 1st, 2nd, 3rd, and green space has all been reinterpreted to fit within one set of walls and are respectively separated with levels so that one feels they are entering a new condition when descending a stair.

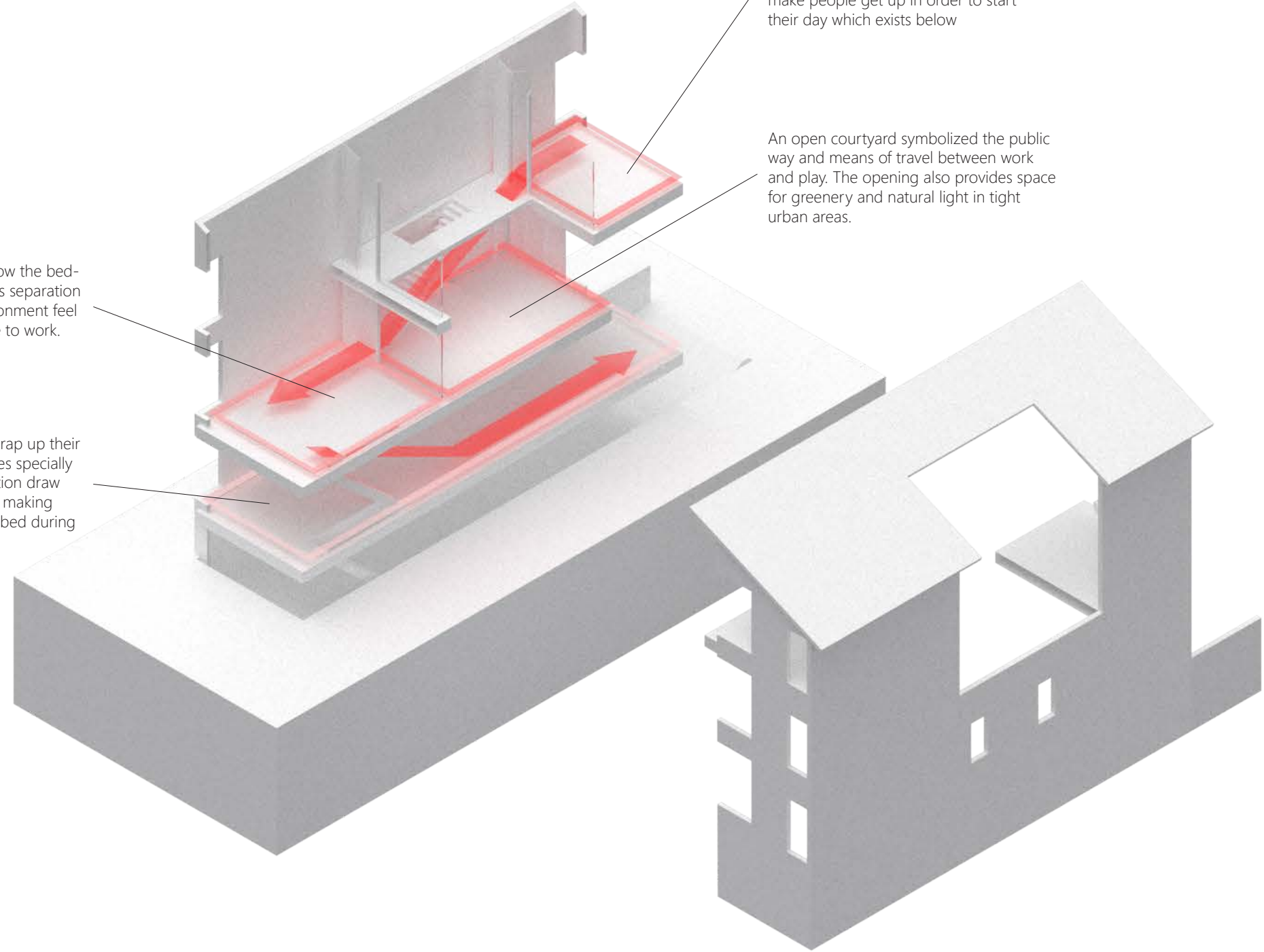
The aim is that someone can wake up in the morning and have the feeling of needing to get ready in the morning. That is then carried on by needing to descend a stair and change space to reflect entering a work / learn environments.. both the bedrooms and work space then have access to a courtyard which is meant to embody the park and offer a break between areas similar to a public way. After getting ready and working the first floor of the house has the amenities and furniture design to reflect the lost 3rd spaces during the pandemic. Rooms and furnitures attempt to simulate the programs of the library and restaurant but in a comfortable domesticated way. This project still has many utilities. The basement has ample storage during long bouts of not leaving the home. Rooms are then designed to be divided and quarantined as well in the unlikely event that someone within the house hold is to get sick. All of this makes this project a new idea of how we can prepare for future events similar to this while still maintaining a standard of living similar to before the outbreak.

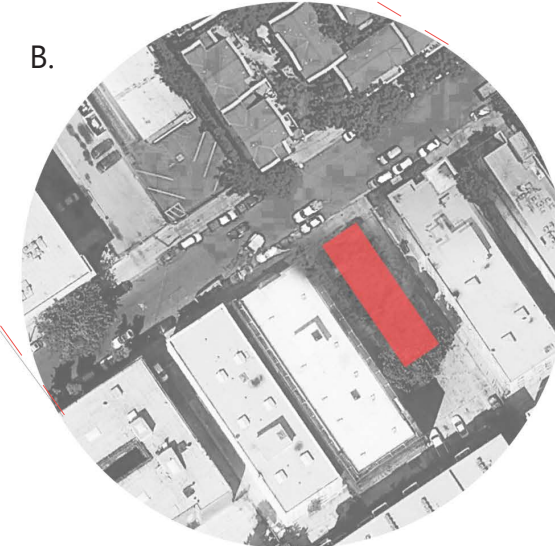
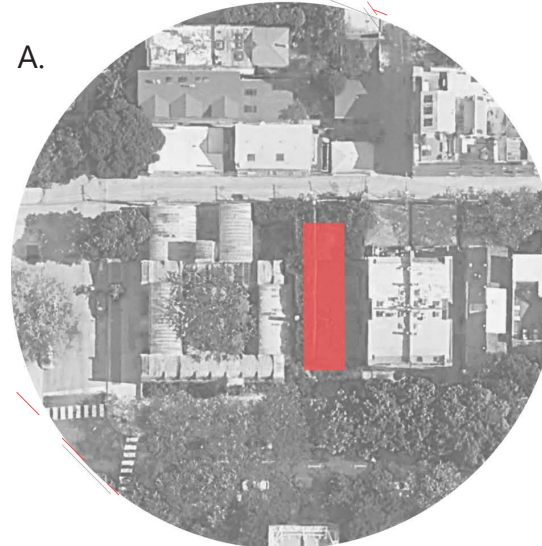
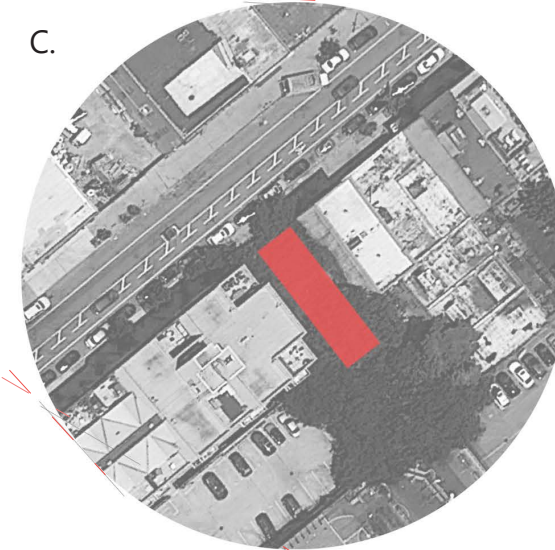
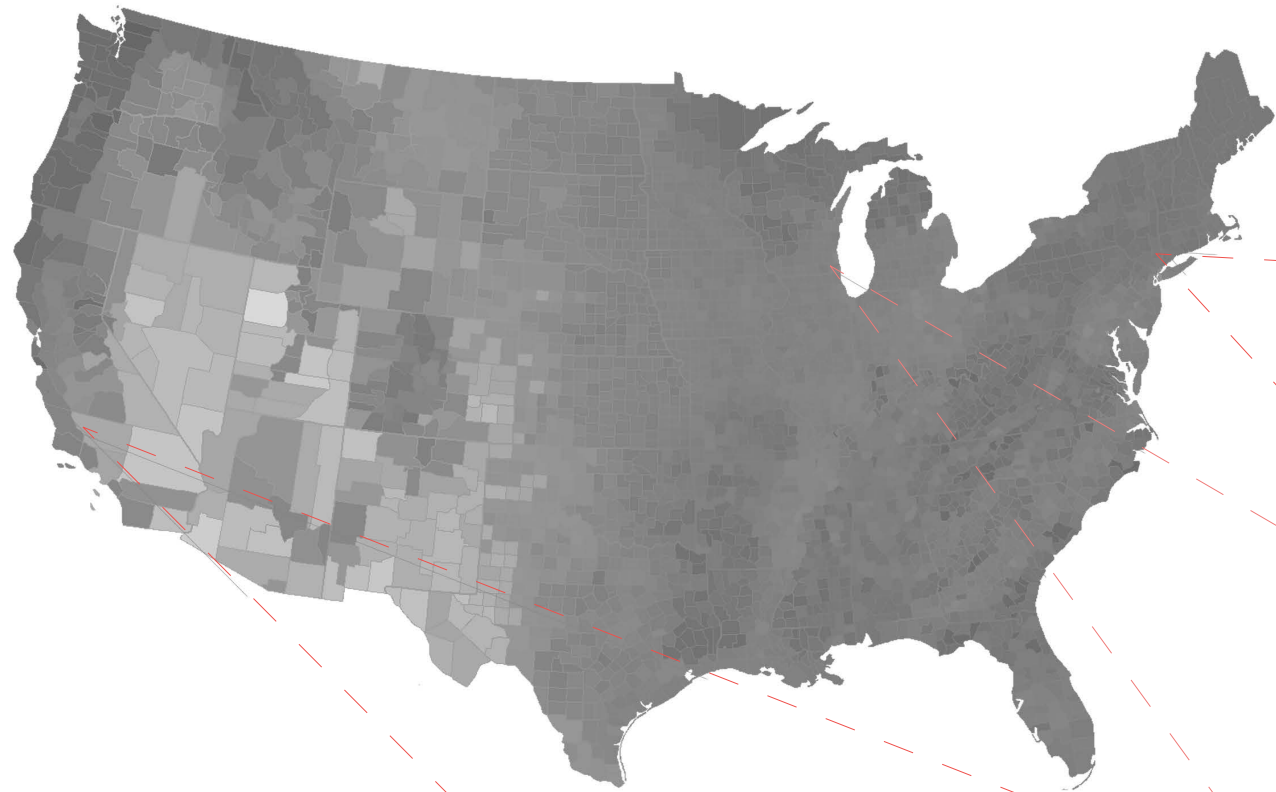
2nd space or work/ learn space is below the bedrooms and divided by a courtyard. this separation is meant to make the change of environment feel more significant, similar to a commute to work.

3rd space is where the residents will wrap up their day with remaining free time. Furnitures specially designed for recreation and conversation draw people to this floor rather than others making people less inclined to just lay in their bed during their time.

1st space is restrained to the top floor in the bedroom. This is done to make people get up in order to start their day which exists below

An open courtyard symbolized the public way and means of travel between work and play. The opening also provides space for greenery and natural light in tight urban areas.





Urban Solutions is meant to be a standardized proposal all over the country and possibly then some. Standard urban lot sizes have been referenced and researched so that the building dimensions will fit in any lot.

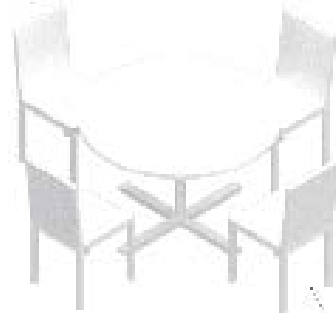
A. Standard Los Angeles lot size 25'x80'

B. Standard Chicago lot size 25'x125'

C. Standard New York City lot size 20'x90'

Urban Solutions size is 17'x67'

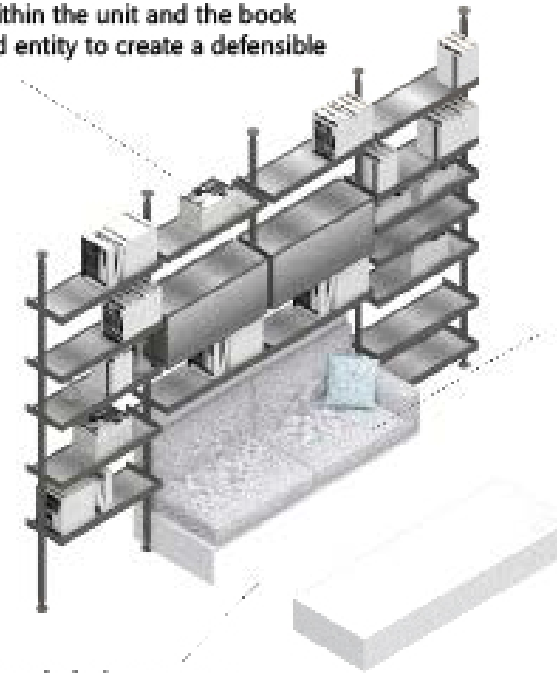
Seating is often placed against a solid surface such as a wall, that seat against the wall is commonly the most used because it is the most defensible



Uncomfortable for readers and often disliked

Standard Library seating contains inward facing chairs making for only one to two chairs being used at a time.

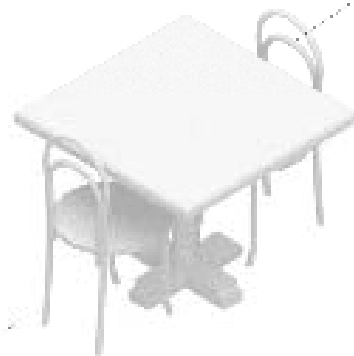
Storage is placed within the unit and the book shelf provides a solid entity to create a defensible space for sitters



Designed for prolonged reading to reduce ones behavioral circuit

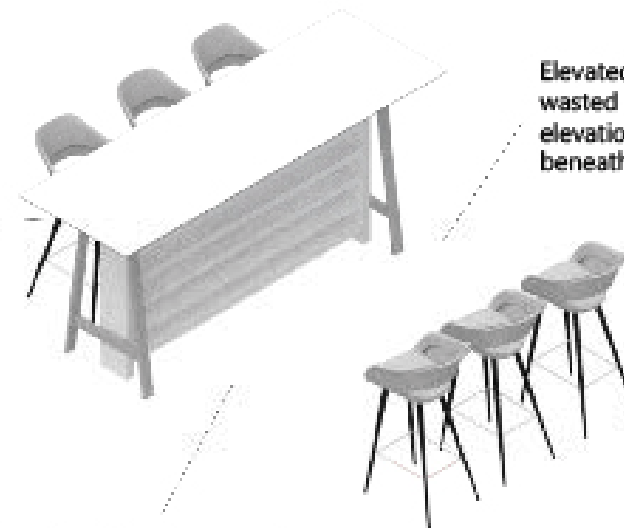
Embedding and placing storage below saves space and makes more area to store essentials during times of pandemic

Small and condensed to fit a large amount in a small space



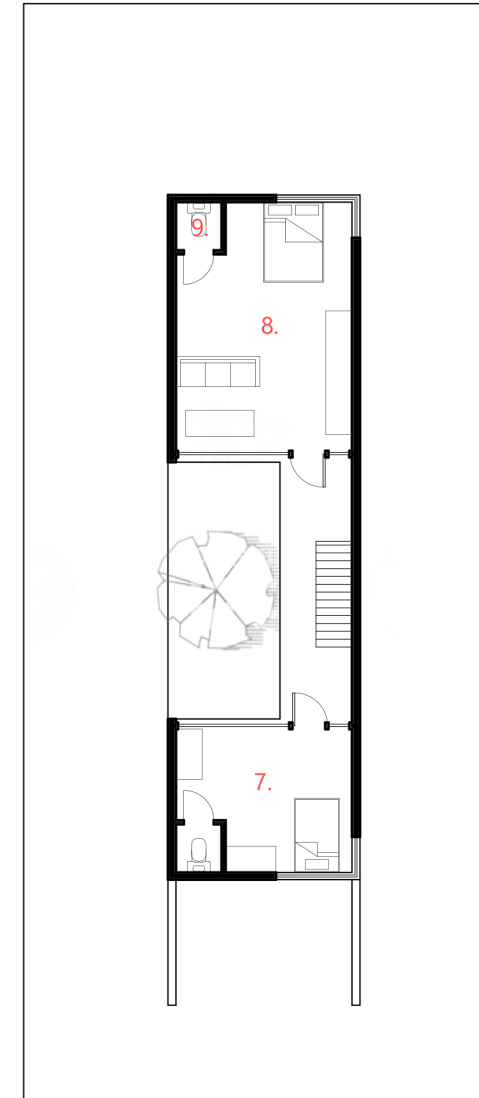
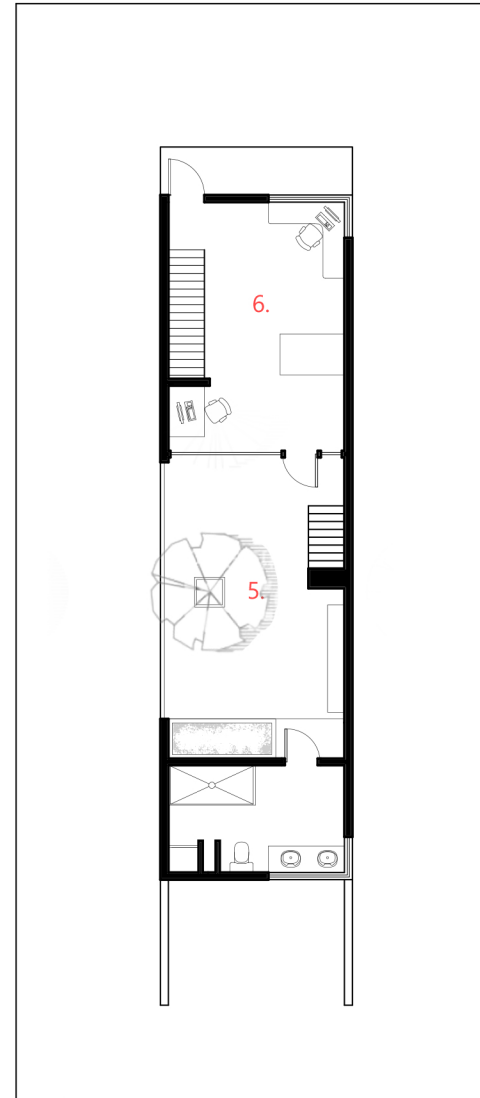
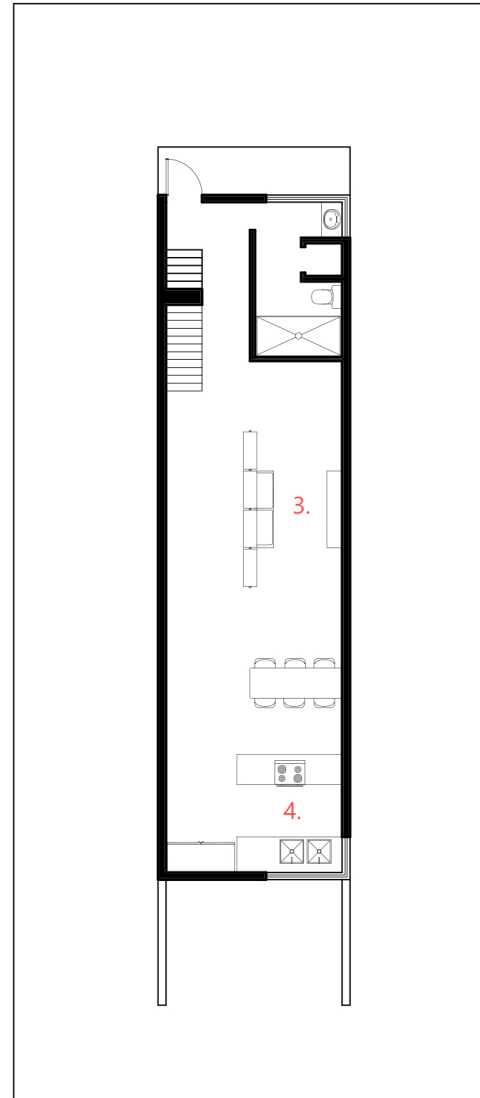
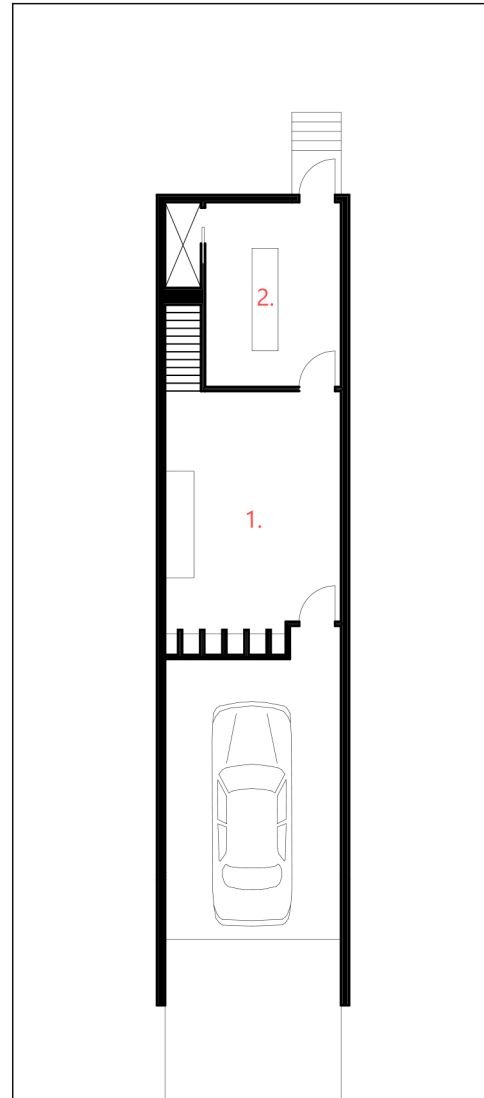
Intended to be uncomfortable to rotate customer

Bar table height to emulate the language of restaurant seating.



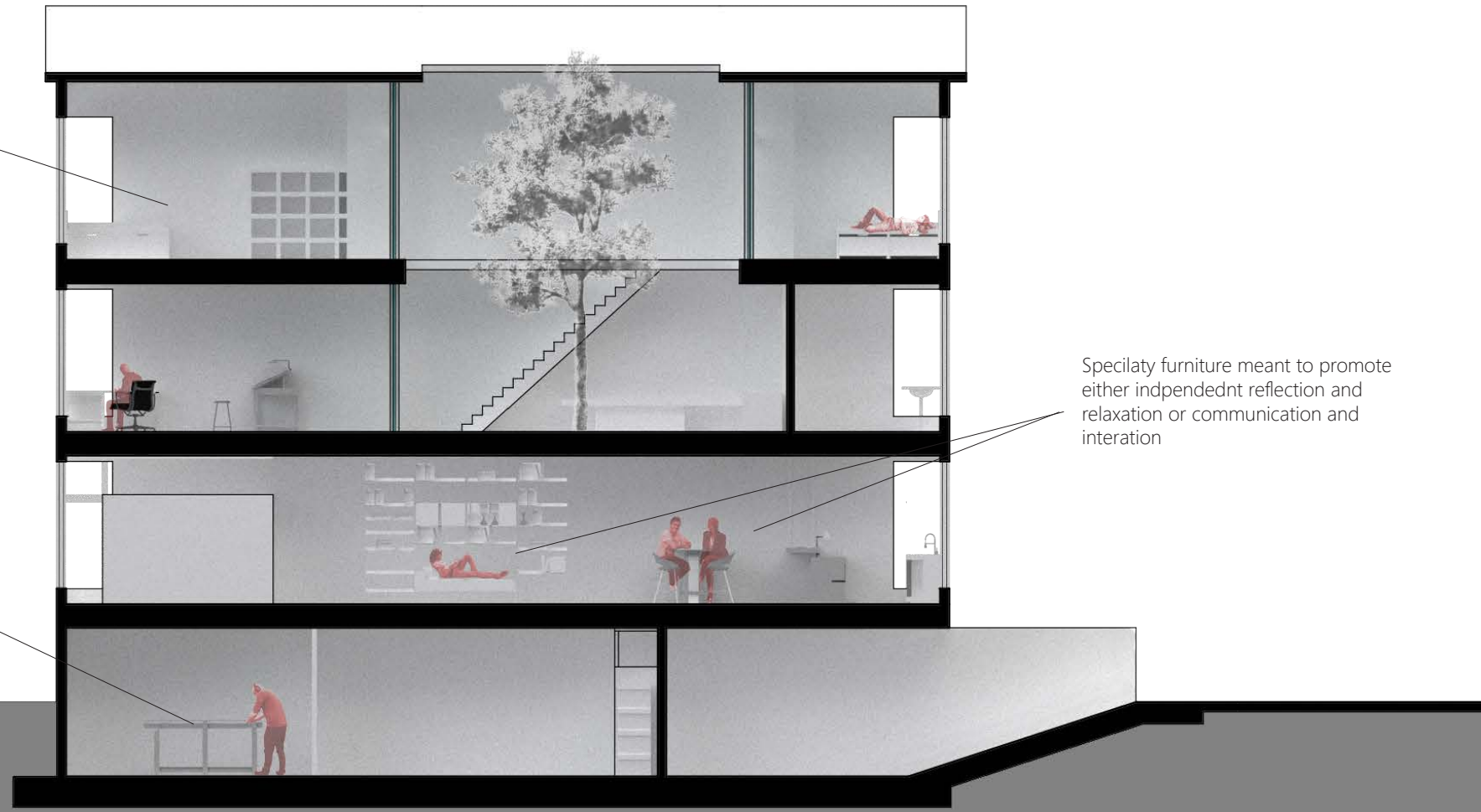
Elevated table to have less wasted space above seating, elevation also provides storage beneath.

Continued small surface area of table to save space in the home



- 1. MUDROOM / STORAGE
- 2. URBAN TOOLS SHED
- 3. LIVING / LIBRARY
- 4. KITCHEN / RESTAURANT
- 5. COURTYARD / PARK
- 6. WORK / LEARN
- 7. BEDROOM
- 8. MASTER BEDROOM
- 9. QUARANTINE BATH

Bedrooms kept minimal and small to draw people out and into the rest of the building



Speciaty furniture meant to promote either indpendednt reflection and relaxation or communication and interation

Basement makes use of urban work-shop to help mitigate the need to go outdoors during times of pandemic

