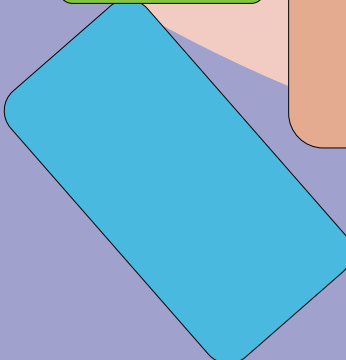
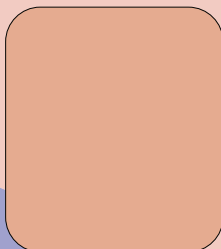
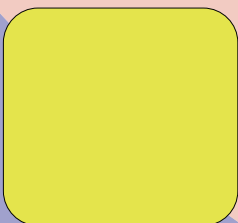
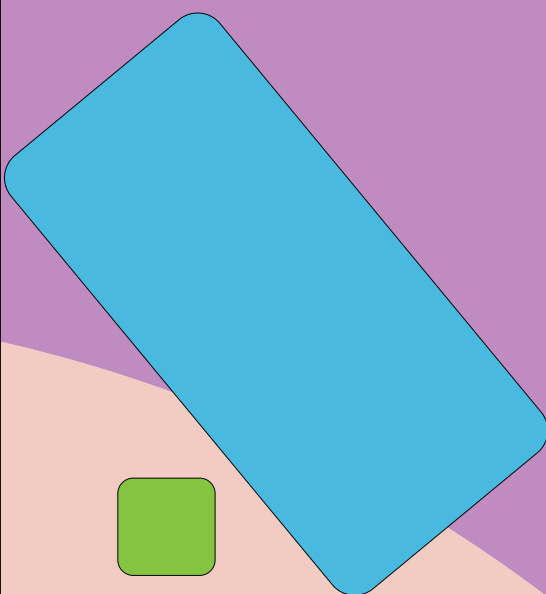
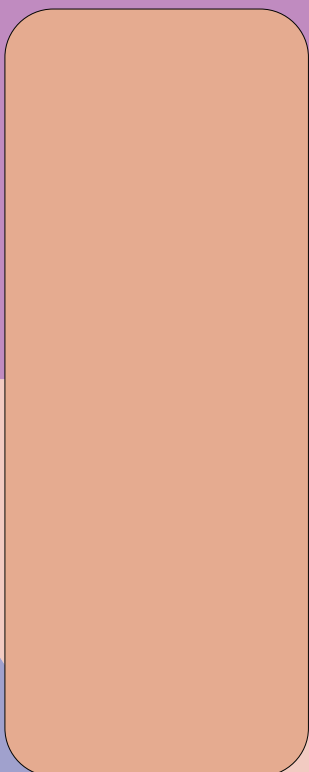


# PANDEMIC LIVING FOR THE RURAL INHABITANT

**M  
A  
X**



**D  
R  
I  
F  
T  
M  
I  
E  
R**

# RURAL PANDEMIC HOUSING

Pandemics affect humanities health and well being historically more than almost any other environmental factor. Millions of people die every year from diseases and sicknesses and in times of pandemic, this number can shoot up into the tens and even hundreds of millions. To fight this humans have evolved not only themselves, but their surroundings and tools to combat this threat. And just like a cold war of germs and people, they do the same.

One often overlooked factor when it comes to public health and fighting off sickness, is architecture. Aside from the developments in construction and finishing materials of homes and bathrooms post Victorian era, there have not been major strides in moving forward with clean and healthy design and if there has been it is more often than not overlooked for the sake of cost and trouble. In addition to that new developments are often killed in their tracks from reaching the common market because disease and pandemic is not something that they think about constantly, putting it at the bottom of many priority lists when designing a dwelling.

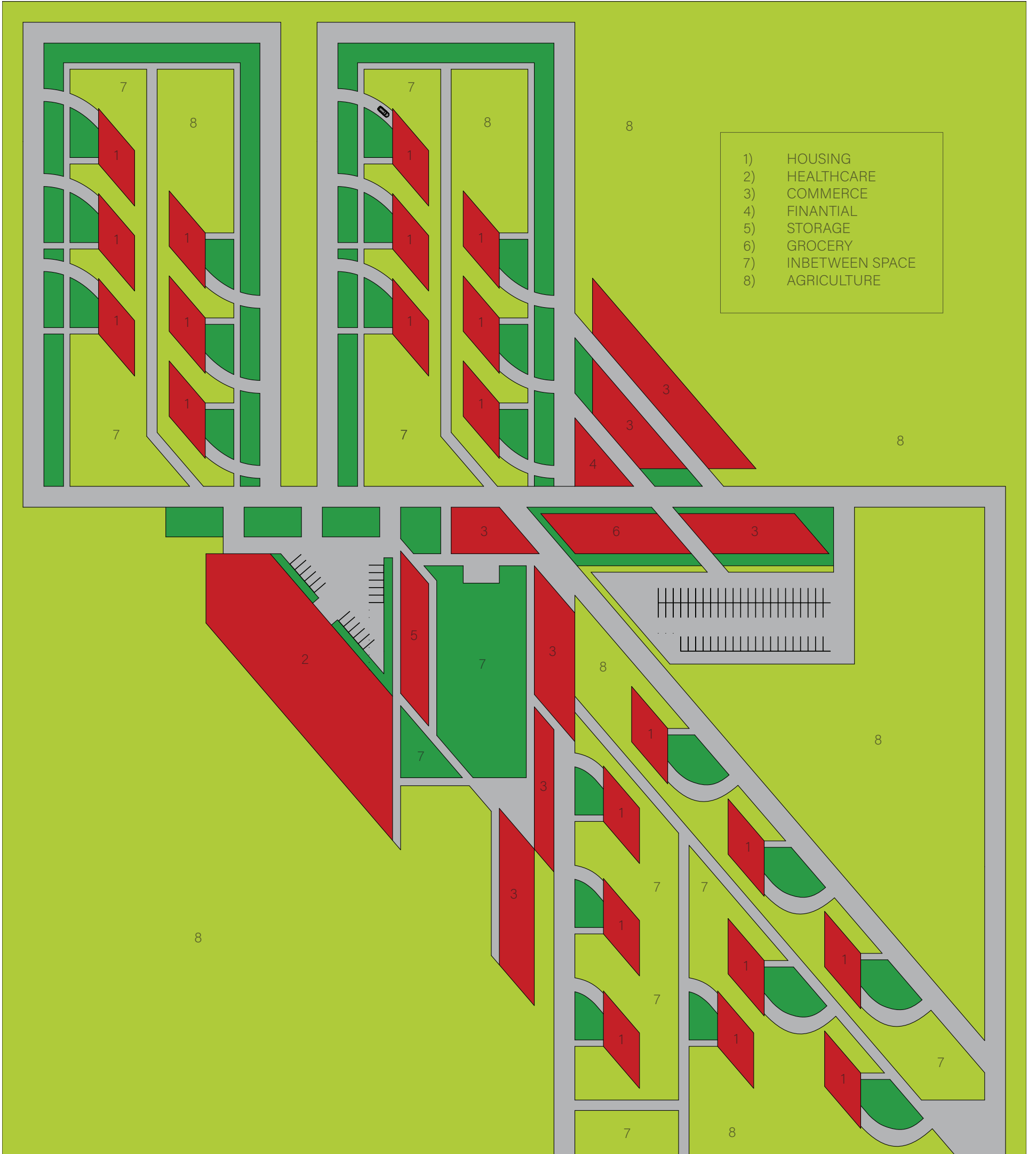
Bringing attention and awareness is the first major step that needs to be taken for progress to be made in healthy design. It must be taught and implemented quickly or death rates will continue to rise.

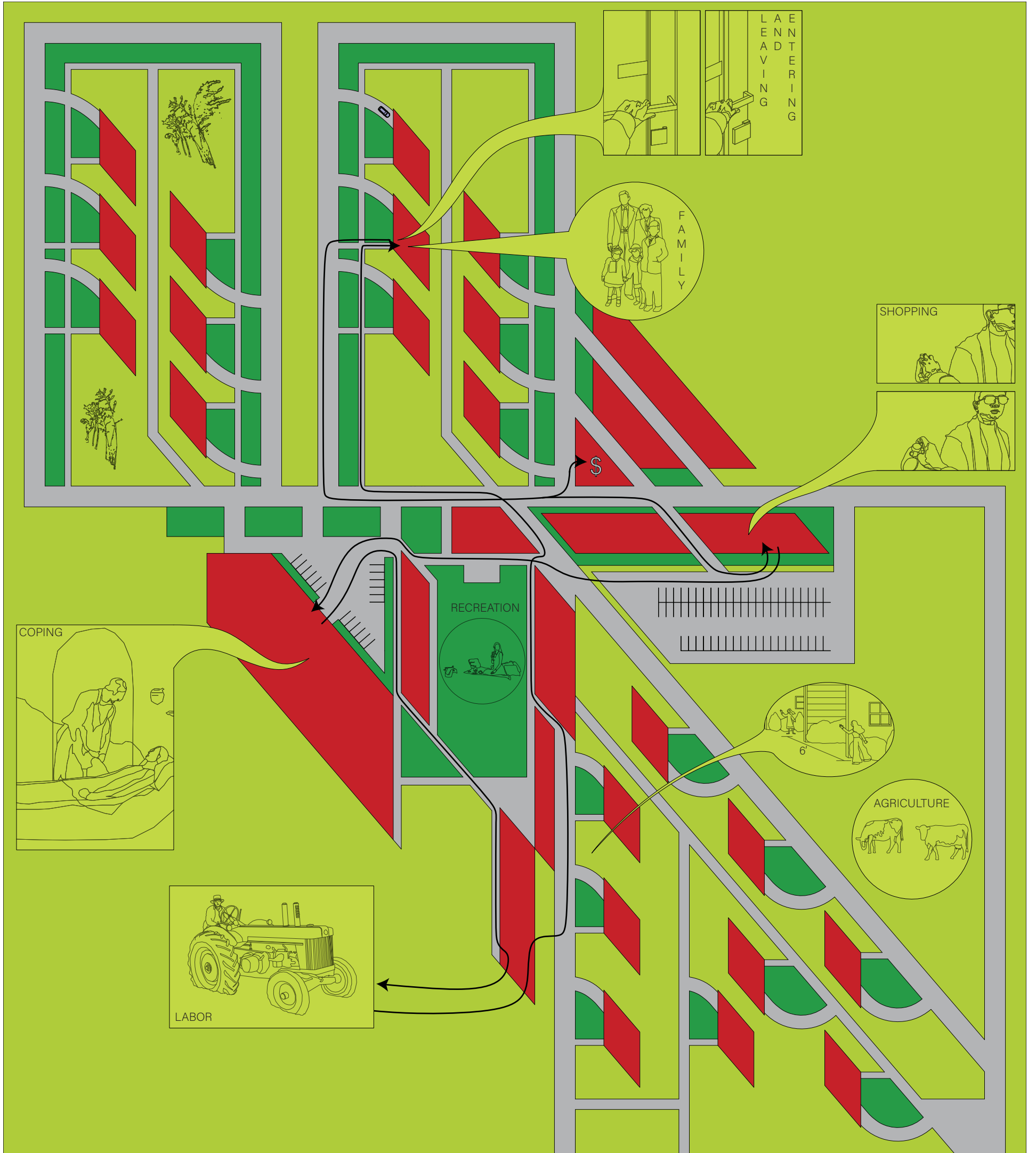
Designing healthily is not the only factor however to prepare against pandemic. Social isolation can cause depression, cabin fever and retreat from society for many people, and maintaining an effective society is the

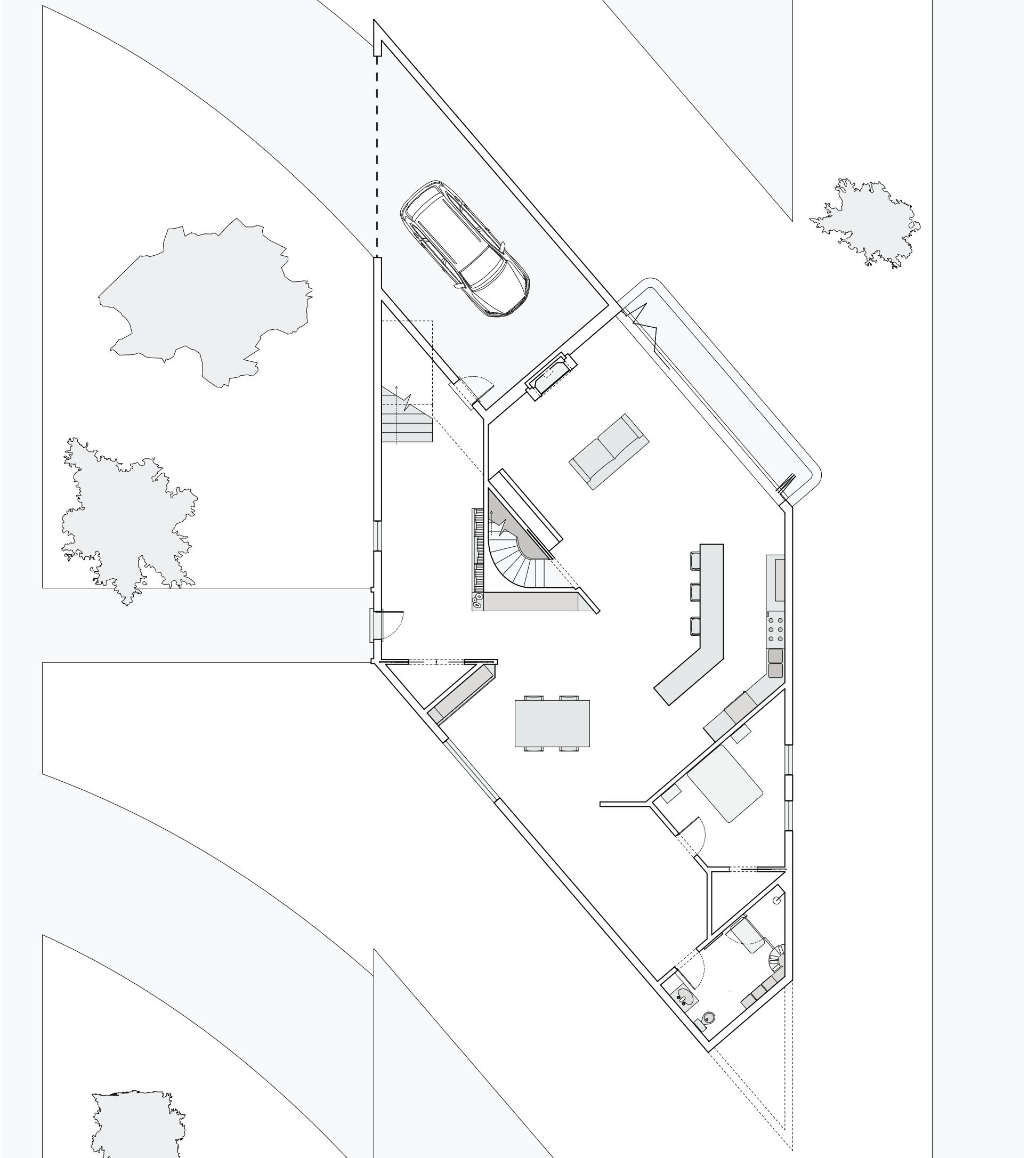
most important thing during disaster because it promotes resilience. So When designing a community from the urban planning scale, down to the family community, maintaining connections safely is hugely important as well. A potentially self-sufficient in time of disaster community with proper public spaces and areas of work and recreation would increase a communities chances of survival greatly.

In my design I focused on the rural community. This is because the rural communities meet all these requirements for a fortified community against disease and pandemic. Buildings are spaced graciously to provide ample room for pedestrian and labor forces to occupy without coming dangerously close proximity with one and other while also not sacrificing pre-existing notions of how a space should feel. Areas for recreation and gathering cannot be underestimated, but group size must be limited and to do this parks have been allotted in such a way that allows communication between groups but for them to also occupy different areas. Farming, labor units and dwelling units have been divided into separate quadrants for social distancing and access to one and other without need of excess fuel or effort. This is because in times of pandemic, petroleum products such as gasoline may become difficult to access.

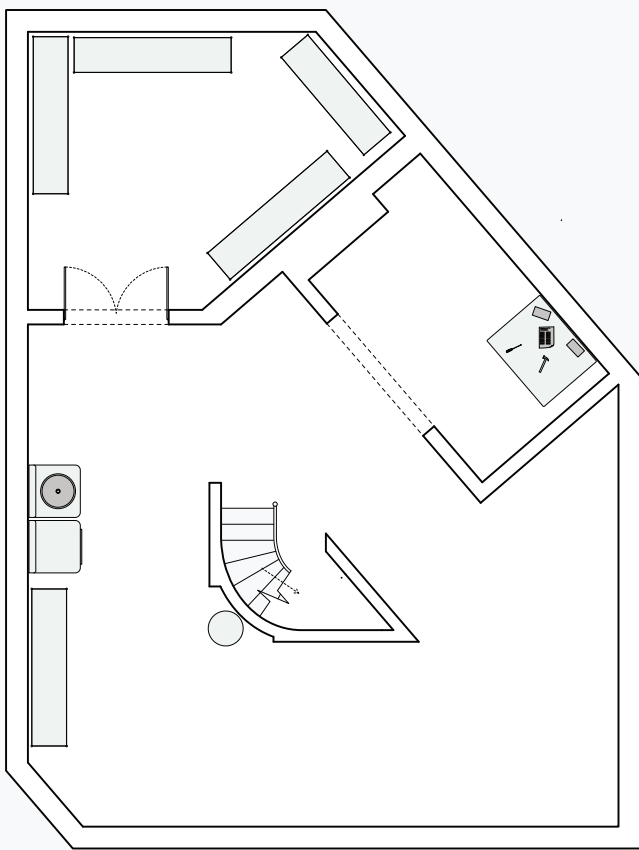
The Dwellings themselves are laid out in a way to provide privacy for those who want it and areas of higher probability of social interaction with each to promote social resilience, community and happiness. These housing clusters are also, in themselves, units of communities that can be repeated within their quadrant for expansion.

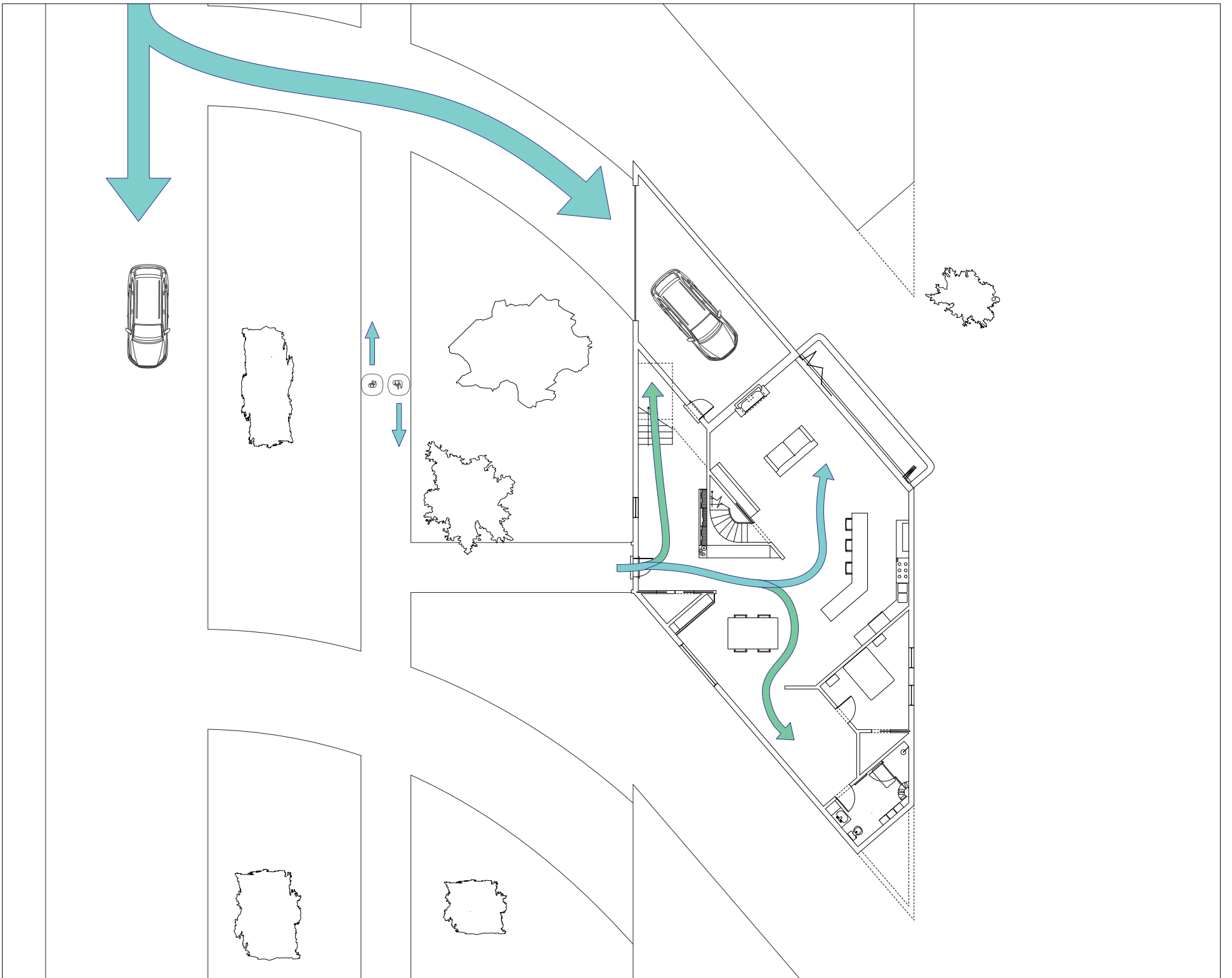




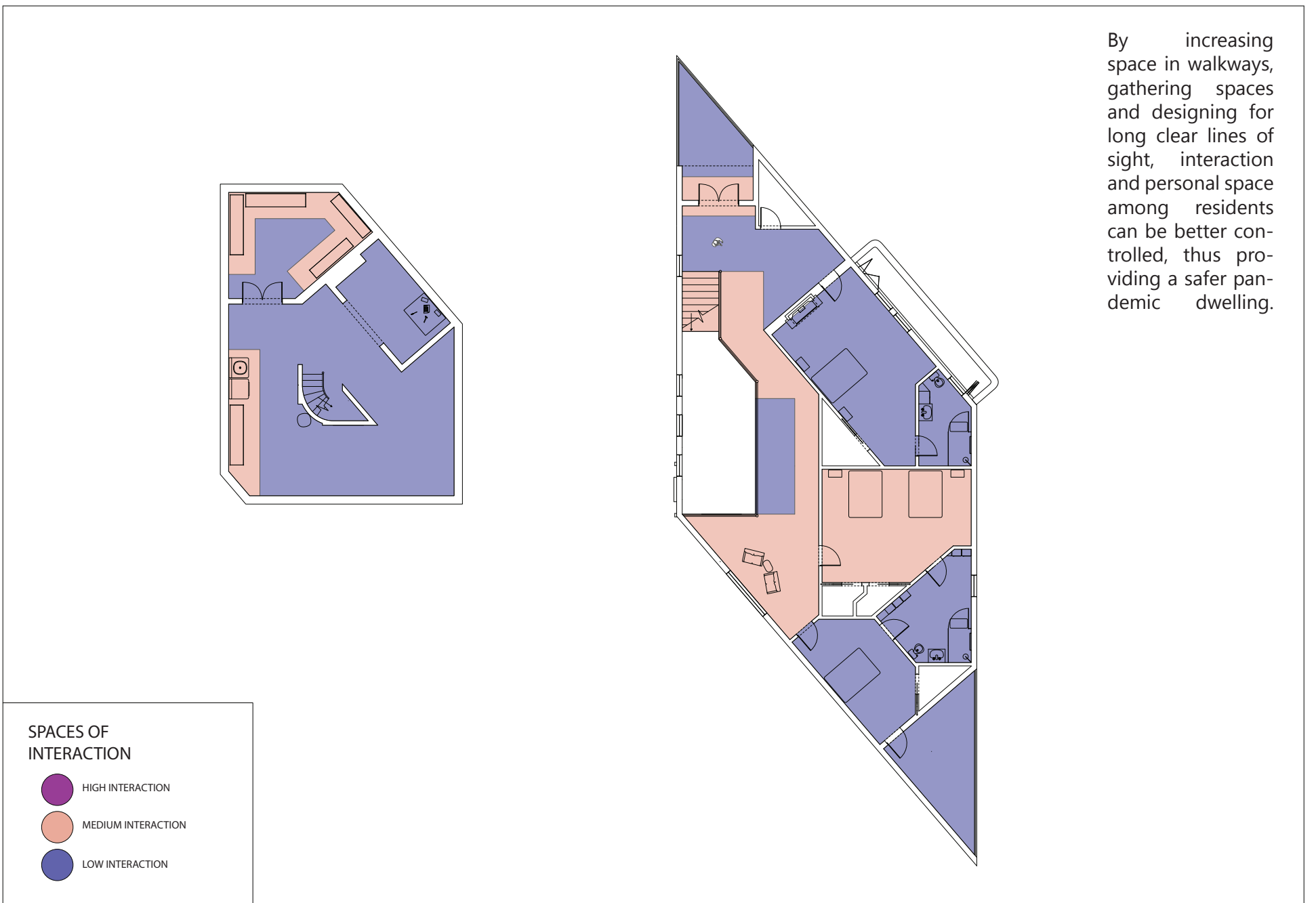
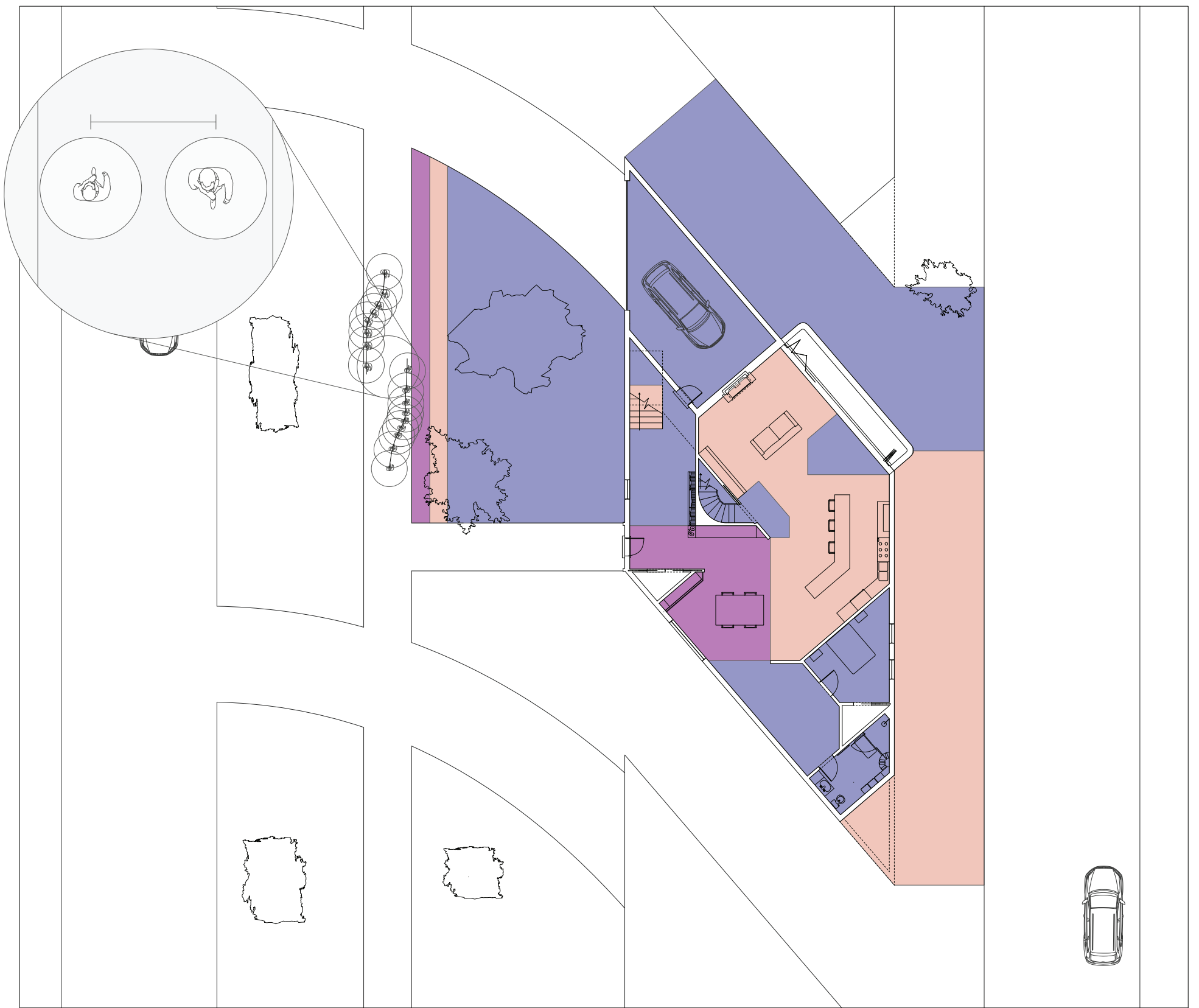


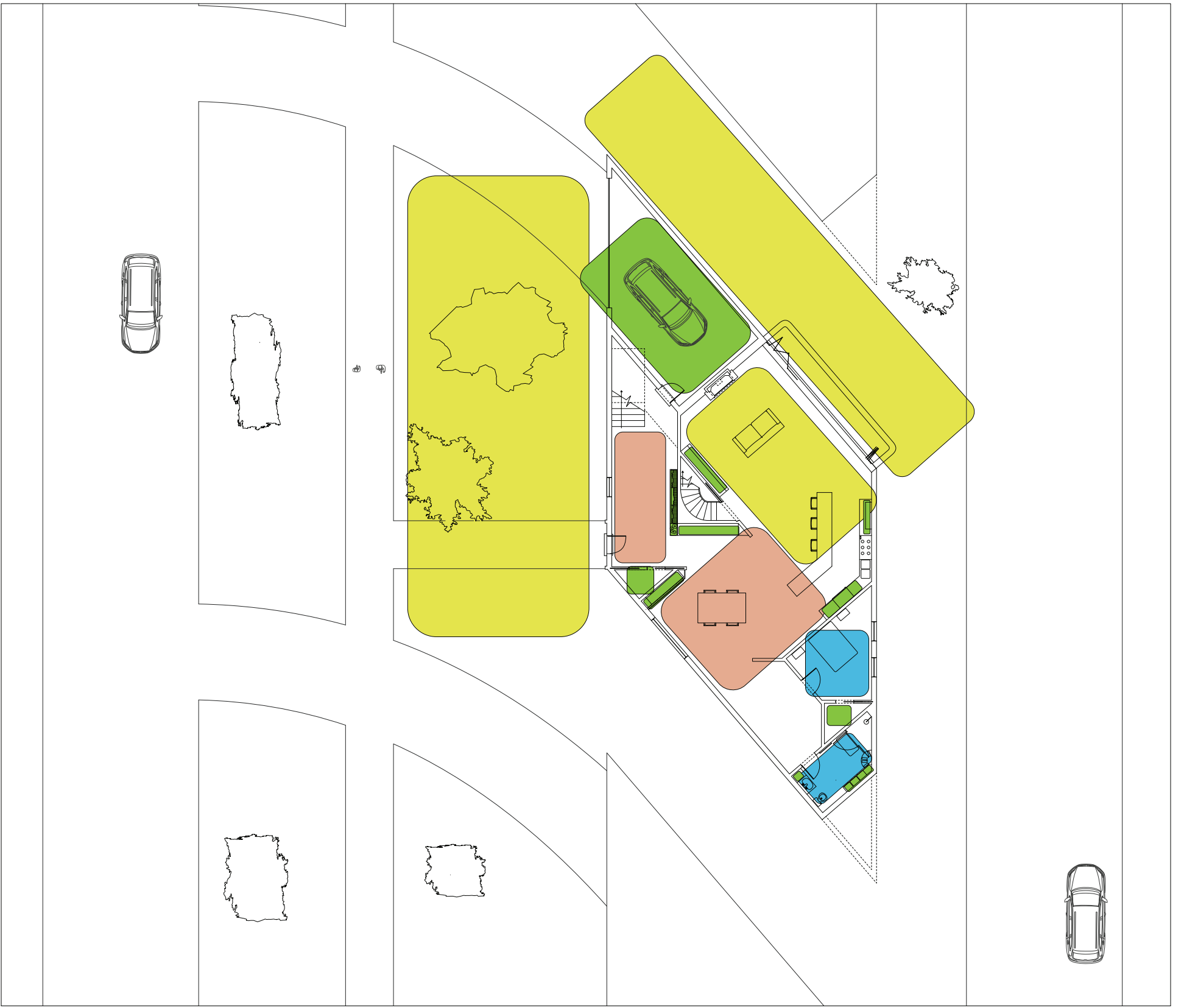












- USAGE ENVIRONMENT**
- RECREATIONAL SPACE
  - STORAGE SPACE
  - COMMUNITY SPACE
  - INDIVIDUAL SPACE



"PANDEMIC HOUSING SECTION"  
MAX DRIFTMIER  
SPRING 2020