

# Oakland Lounge Redesign

Covid – 19, a virus that turned into a global pandemic. Something I never imagined myself having to go through, ever in my lifetime. Now only being 22 years old and it hits home. It's here and living larger than it has ever before. Now we think, how do we stop it. Well living in it now, I have noticed some architectural fails when it comes to health. More in particular I notice what fails I am living through. When thinking about this pandemic and how architects could help it, most people would think about health care, for obvious reasons. How could we make those buildings more health oriented, keeping the sick away from the healthy. When I think of how to make this pandemic better, I think about home. When this pandemic hit, we got told to go home, and stay there. Well, no one was ready for that. Schools, restaurants, bars, stores, peoples workplaces, and many other establishments closed down due to the virus, something some people had not planned for. Parents are no longer leaving to go to work nine to five at their jobs anymore, now their jobs are to teach their kids because the kids are no longer going to school. Going to get groceries seems to be between healthy or sick. The second you walk out the front door it's the paranoia of the coronavirus is going to somehow, some way make it into your respiratory system and you will be the one that ends up in the hospital. Well how can architects make that easier, no more paranoia. I think we start from the root, the home. We are told to stay here, but its not 100% livable. My design is going to be an apartment/living complex that ties together everything that is needed to live independently without ever having to leave.

The lounge area that is currently in my apartment is dark, old and stinky. I am designing a concept in a way to open this up for the public health for the people who live in the apartment. In a time where there is quarantine, we humans feel very trapped, isolated from the outside world. I designed a entrance to my current apartment that includes bike storage, mail room, lounge, additional storage lockers, computer desks and two ways to get to the apartments from this entrance. Bike storage and mail have been huge issues all the time. The bikes and a mess and there's not enough space and mail/boxes are places all over the lounge. The lounge area that we currently have is very small. Opening this up for multiple purposes will help us, feel like this is a place we can go, to not feel so isolated to our apartments. By adding additional storage could be used for nonperishable food for times like quarantine. Also, by adding two stairways to get to the apartment hallways help for the access of people not be secluded to one stairway.

Kelsy Martin  
Arch 302

1



Very dark and low entrance to building. Can seem very cave-like.

2



Black heavy doors, seems very closed off to the outside. Black or dark trim gives the effect of being very old and quite gloomy

3



First glance into the door, easy to smell an old musty smell. Not only does it look old but has the smell of being old too

4



Old furniture and paintings. The lounge area is very small, where a group of 4-5 could only sit. In a distancing effect, only 1-2 people would be able to use this space

5



The small dark framed windows do not let a lot of natural light in causing this space to be very dark and poorly artificially lit.

6



Mail space is very small and close to the only entrance door for the front. If distancing is in effect this area could cause many problems.

7



Small and tight area for elevator. could cause issues for distancing if more than one person needs to use it at a time.

8



Dark stairway that is very closed off. Only one person could use these stairs at a time if distancing is in effect.

# Mail Storage Issues



Packages are being placed everywhere, hard to tell whose they are without looking through them all.



Packages piling up in front of mail boxes, possible tripping hazard.



Packages in lounge area, this space could become unusable.

# Bike Storage Issues



Bikes stacked on top of other bikes



Bikes placed in front of door way, possible tripping hazard

Not enough room on bike rack to fit more bikes

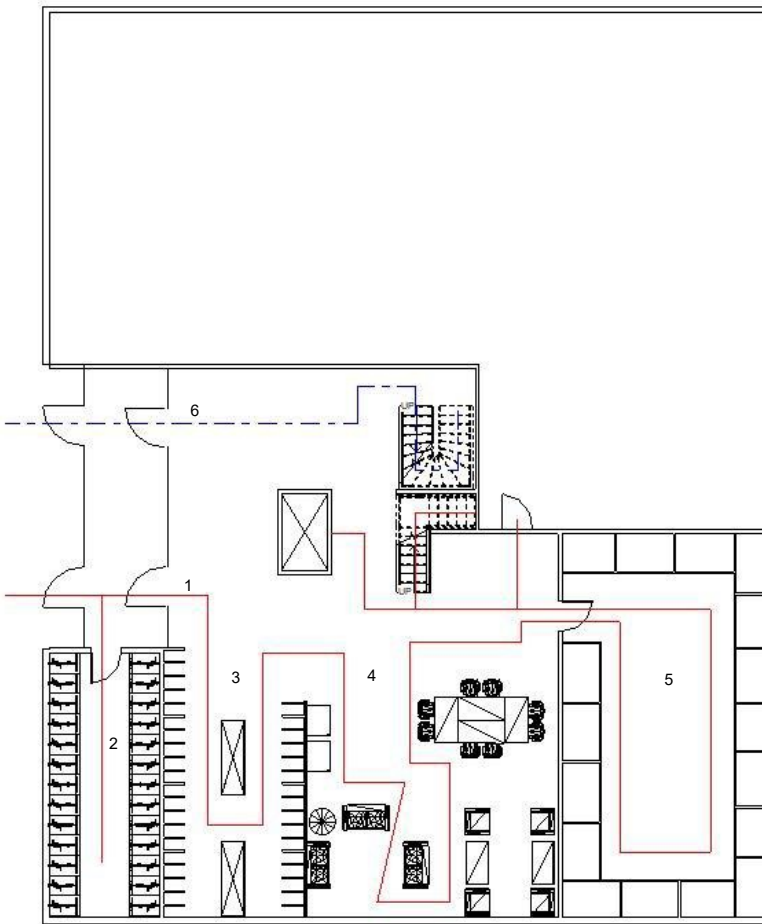
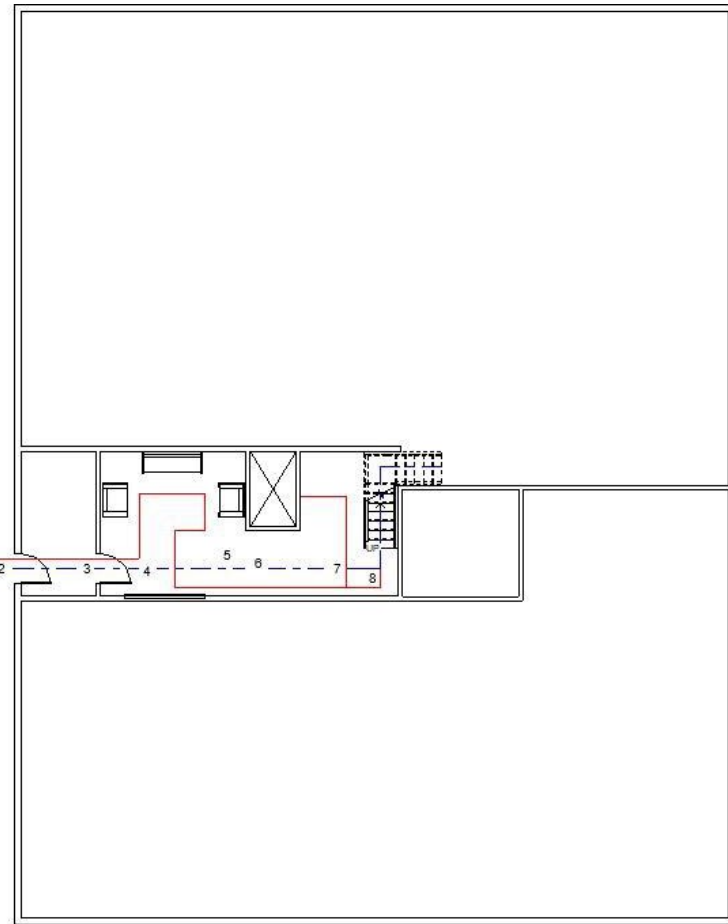


# Current

# Proposed

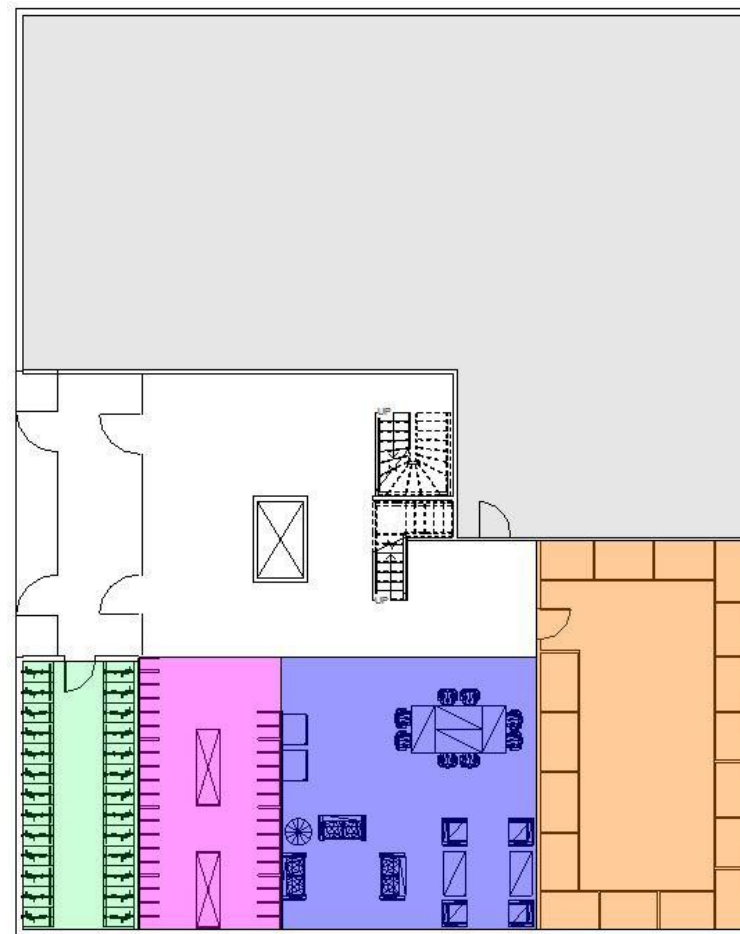
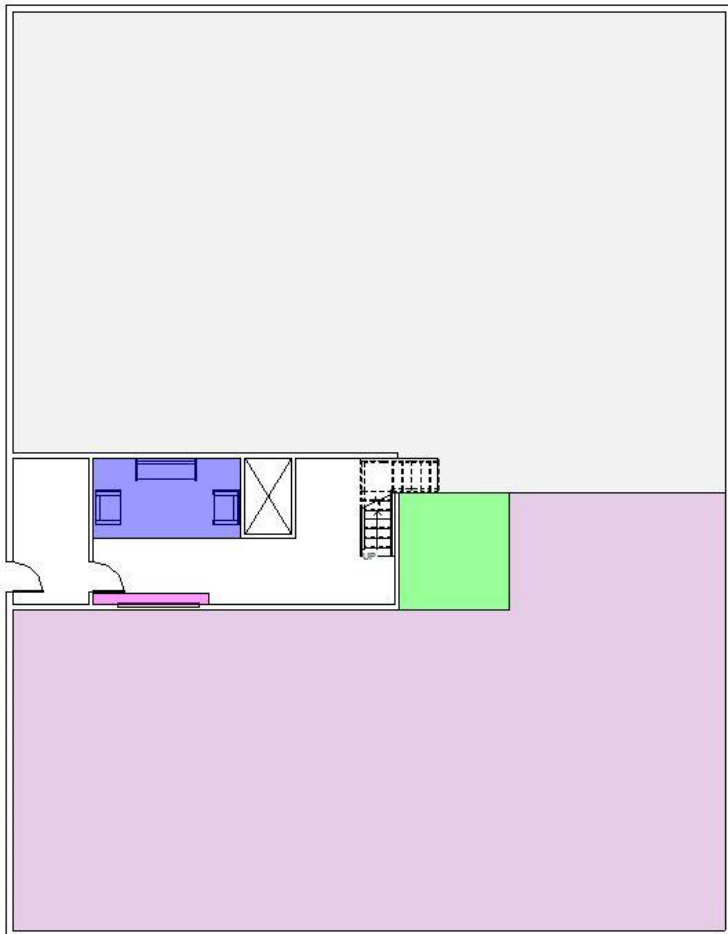
## Pathway Plan

- Possible Pathways
- Direct Pathways



## Area Plan

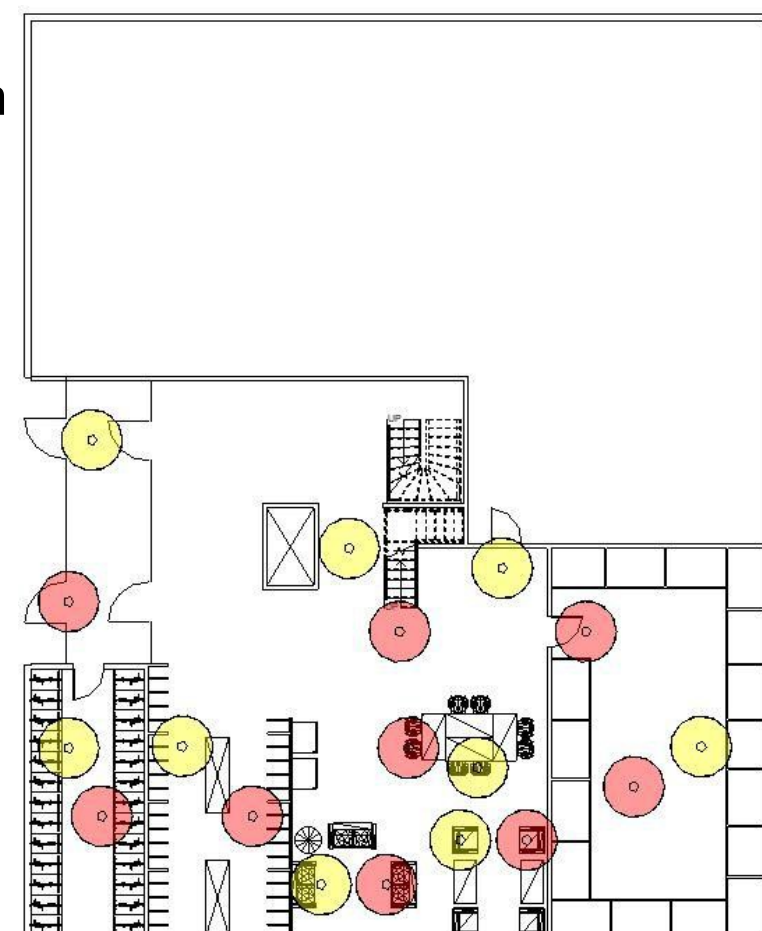
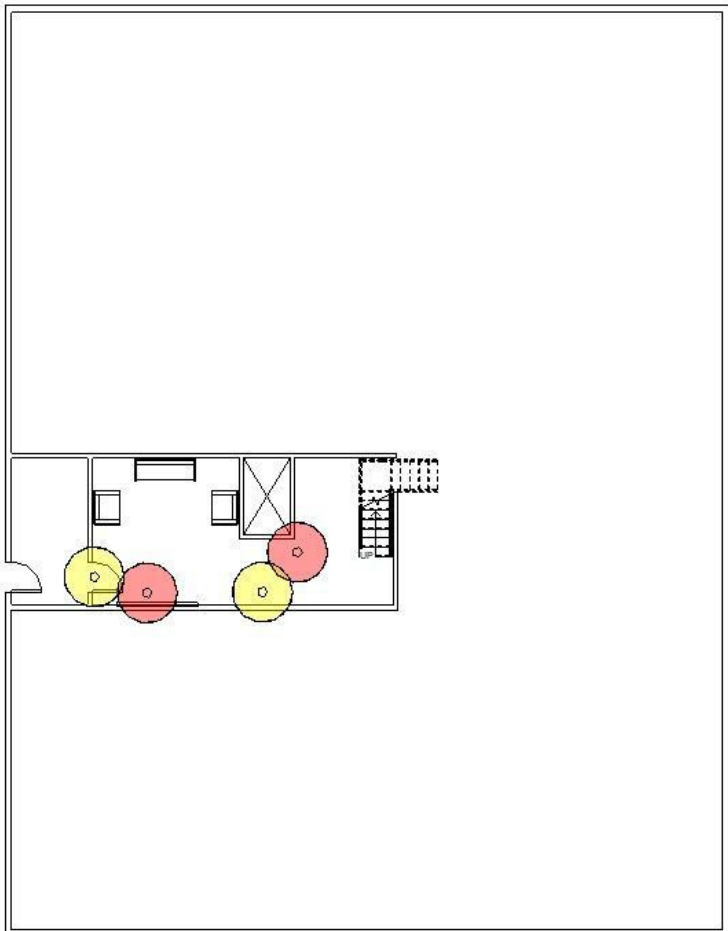
- Garage
- Existing Storage/Empty Space
- New Storage Lockers
- Lounge
- Mail
- Bike Storage



## Distancing Plan

- Person A
- Person B

Note:  
Each person has a radius of 3'



Storage units for each apartment unit, storage units are 4'x5'

Lounge area, with three couches and four chairs.

TV, with possible news casting to update the people

Mail cubicles, used for mail and package storage. Each apartment gets their own mail cubicle that is 1'4"x2' each cubicle goes from floor to ceiling

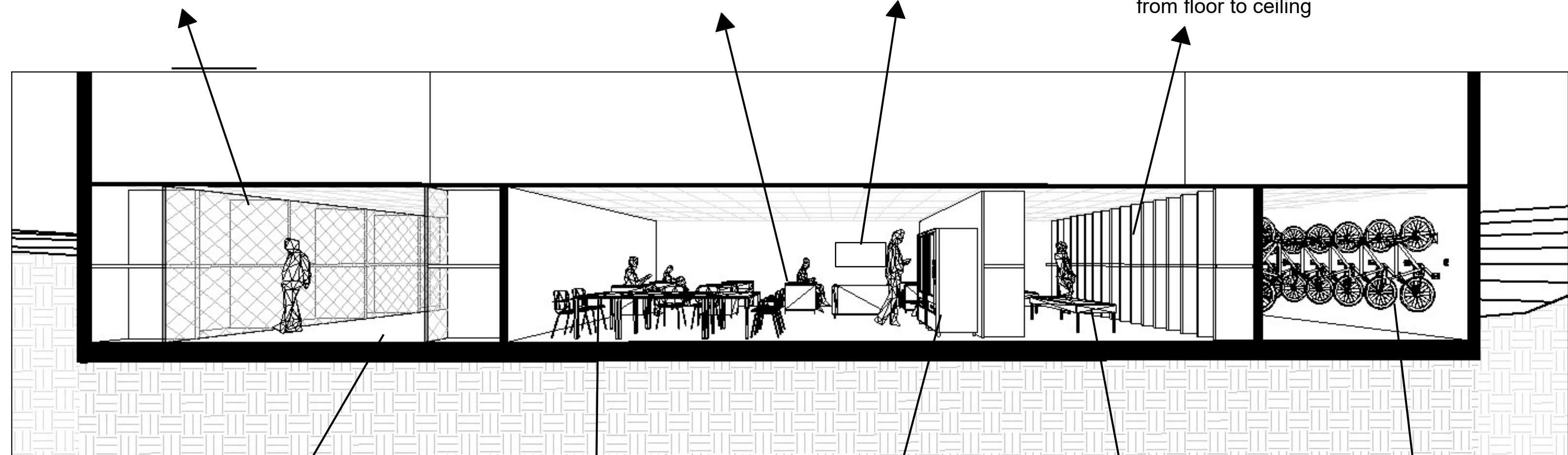
Large open space between storage units, easy for passage and movement, 10' passageway.

Large dinning or table space, good for dinners out of the apartment, paperwork, or gathering space.

Vending machines. For a quick snack without leaving the complex.

Median seating, good for a quick sit while reading mail, or if needed for additional storage

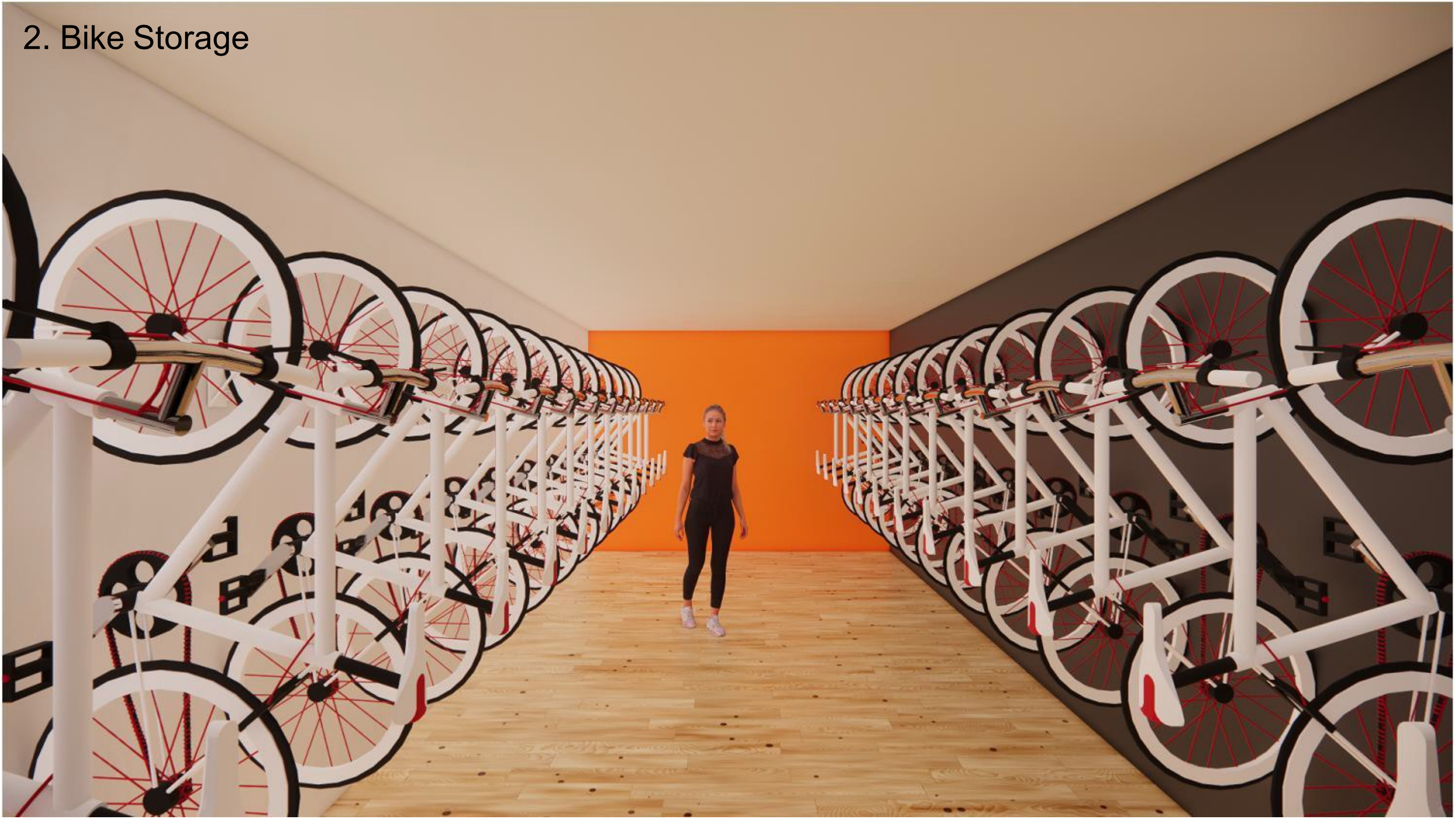
Wall mounted bike racks, good for additional storage space and passageway.



# 1. Entrance



2. Bike Storage





### 3. Mail Room



# 4. Lounge



## 5. Storage



## 6. Computer

