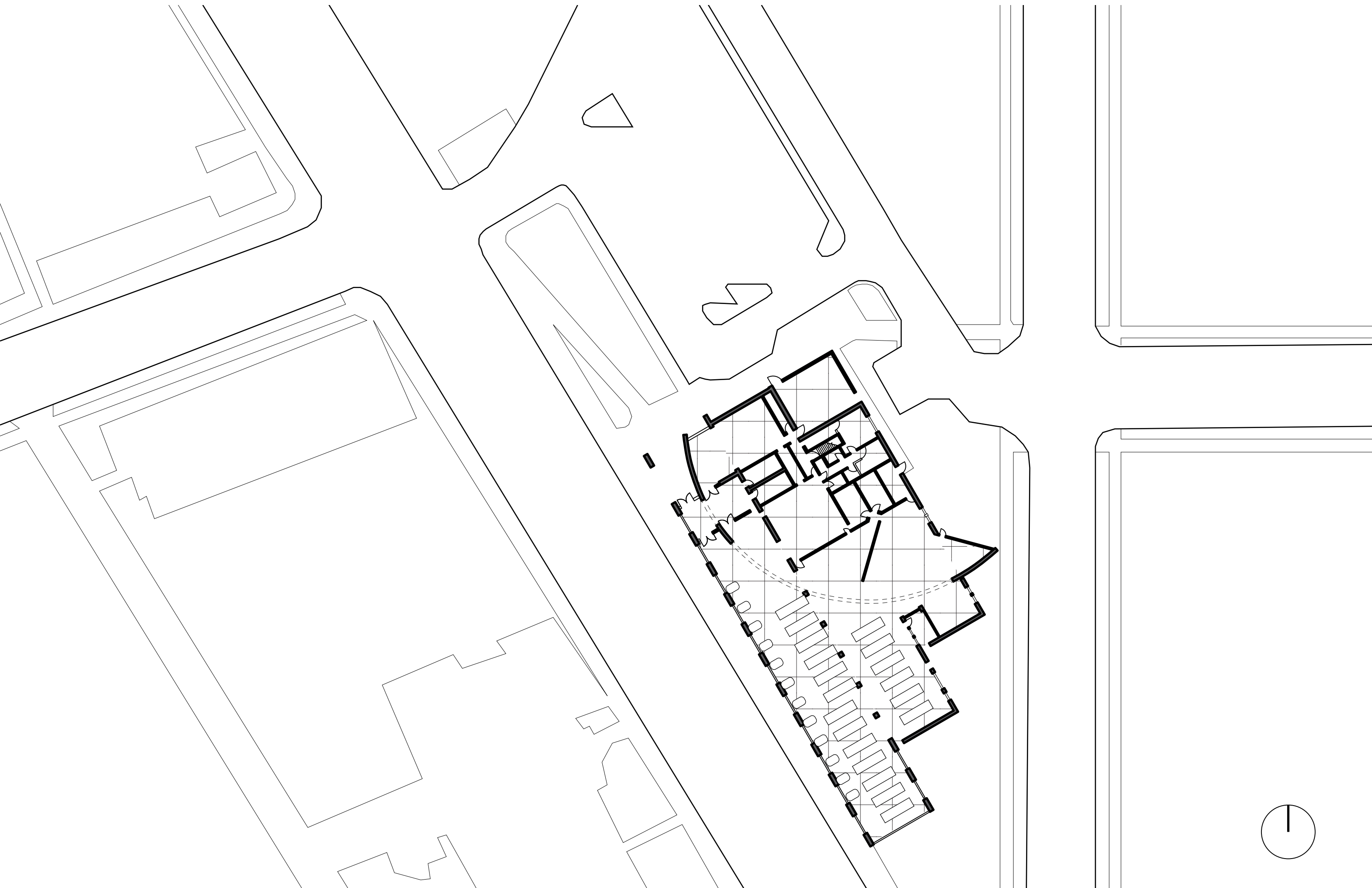


# BIBLIOPHAGE

*Designed by - Jack Davis*

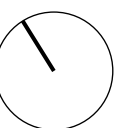
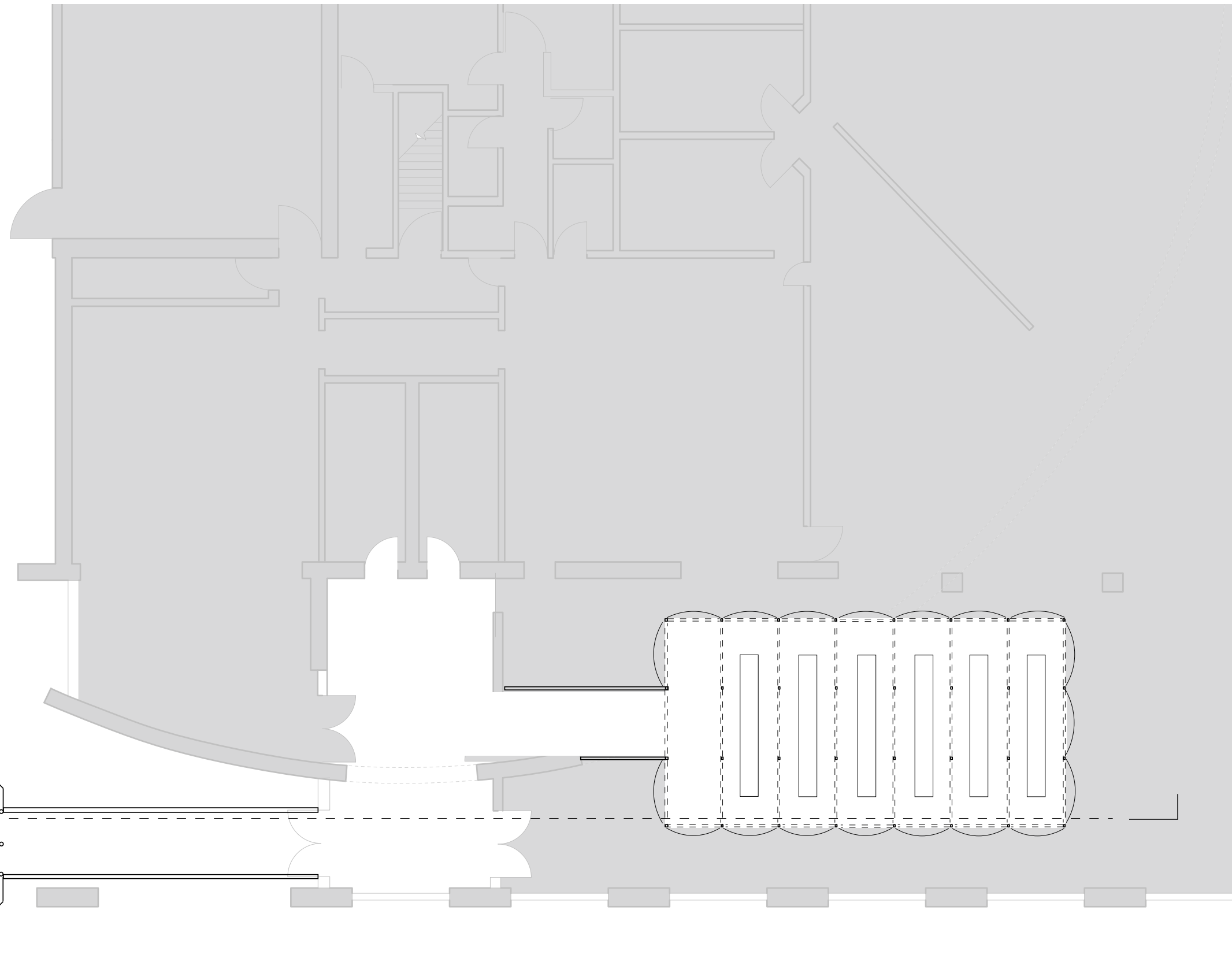


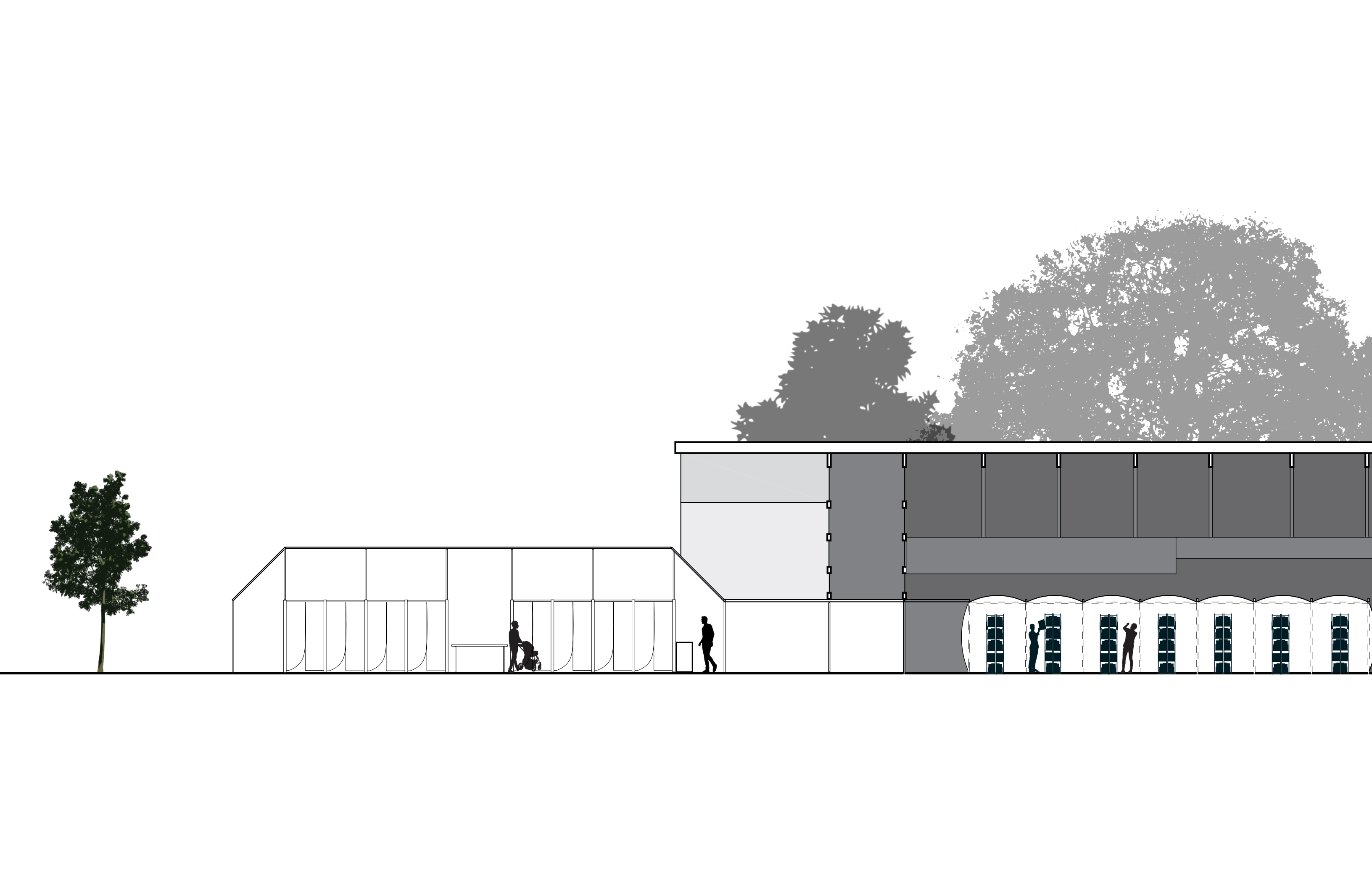


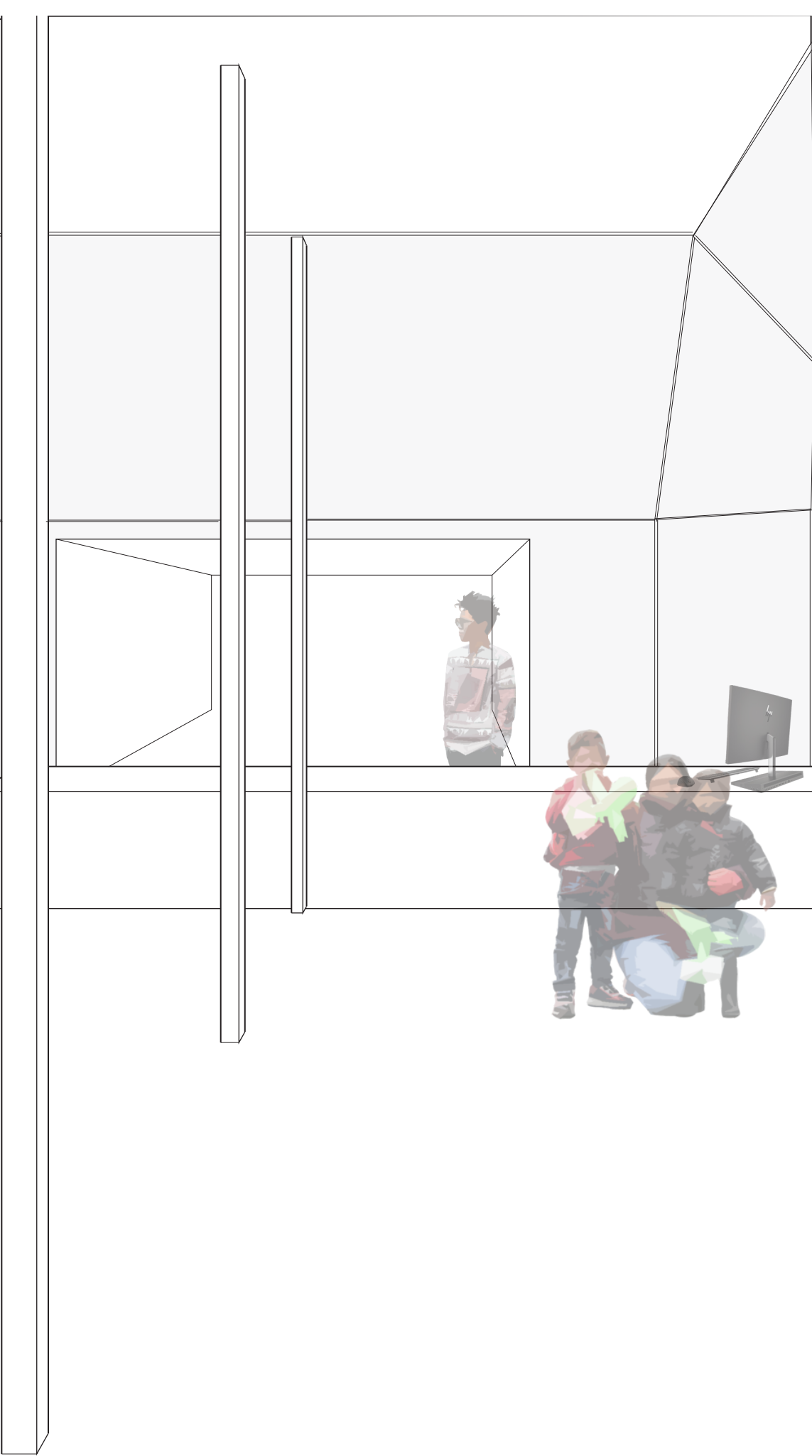
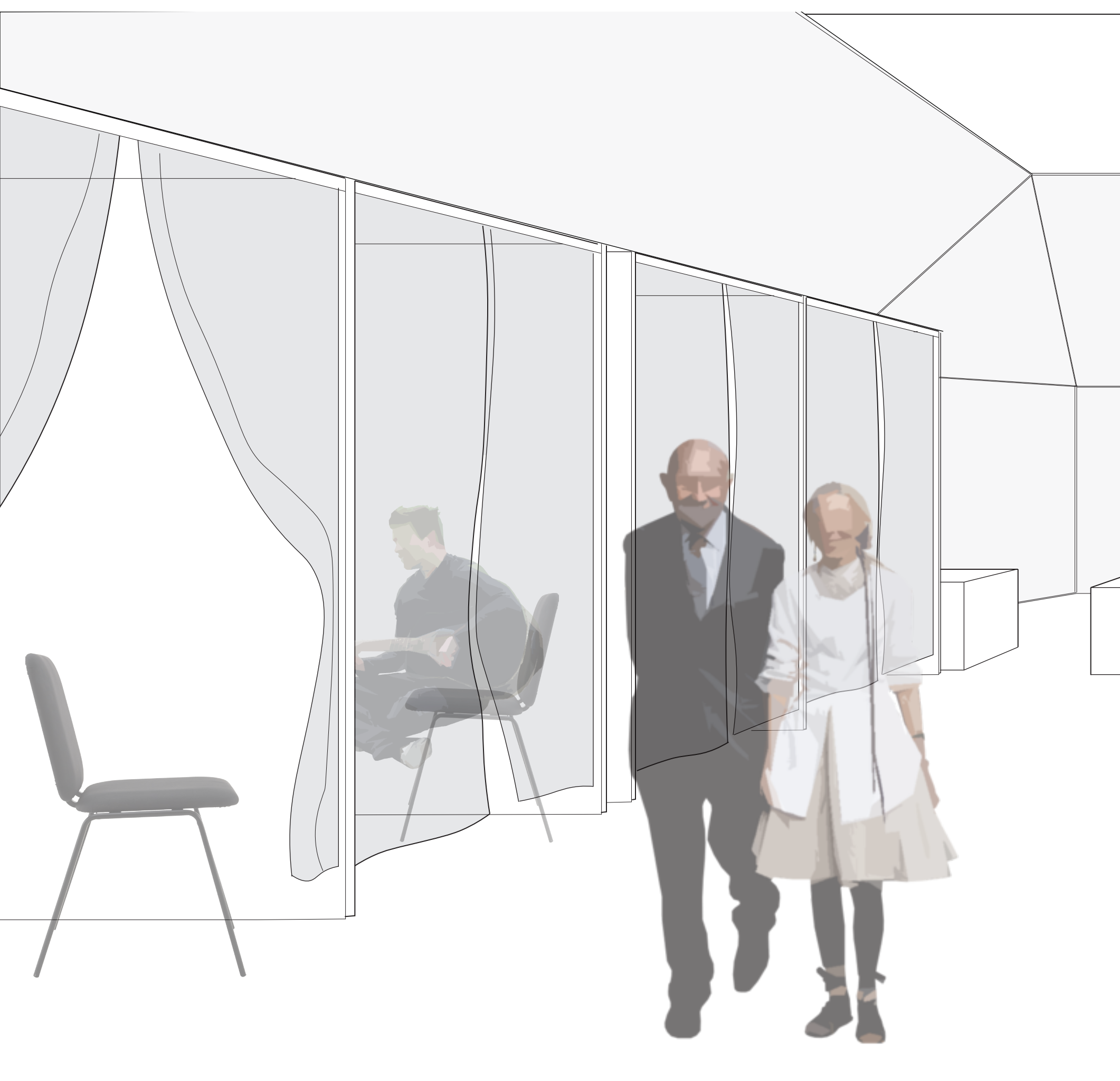
In the present day, libraries are becoming less and less valued as educational tools than what they were hailed as in history. The migration of recorded information to the internet has caused a dramatic shift to the way current day libraries are designed. Arguably the modern library is not centered around text in the physical form. Digital books have transformed the way libraries are shaped. These spaces still contain vast quantities of information both digital and textual. Not every single piece of text has been converted to an electrical form. The resources that libraries possess are crucial to the community around it. This is why designing a temporary structure during a pandemic would be important.

The design of the structure takes inspiration from the form of a bacteriophage which is the iconic image of a virus. At the crystalline head of the structure is the access point in which visitors are given access to limited resources that the library had previously provided to the public. A stem then branches from the head and snakes into the existing building where it spills out into an inflatable structure that embodies the spewing of the virus' DNA into its host. The new structure itself symbolizes a virus and the existing library represents a cell that the virus has latched onto.

At the bare essentials during the pandemic, people have lost connections to many loved ones due to lockdown restrictions. One of the only ways people can see that their family is alive and well is through a multitude of video and phone calls. Not everyone has access to the internet and pre-pandemic libraries held so much importance to those without computer access. The head of the structure supports sixteen different cells in which families and individuals can utilize computers to connect with their family. As a sub-focus the head also supports access to a limited supply of books held in the inflatable portion of the structure.



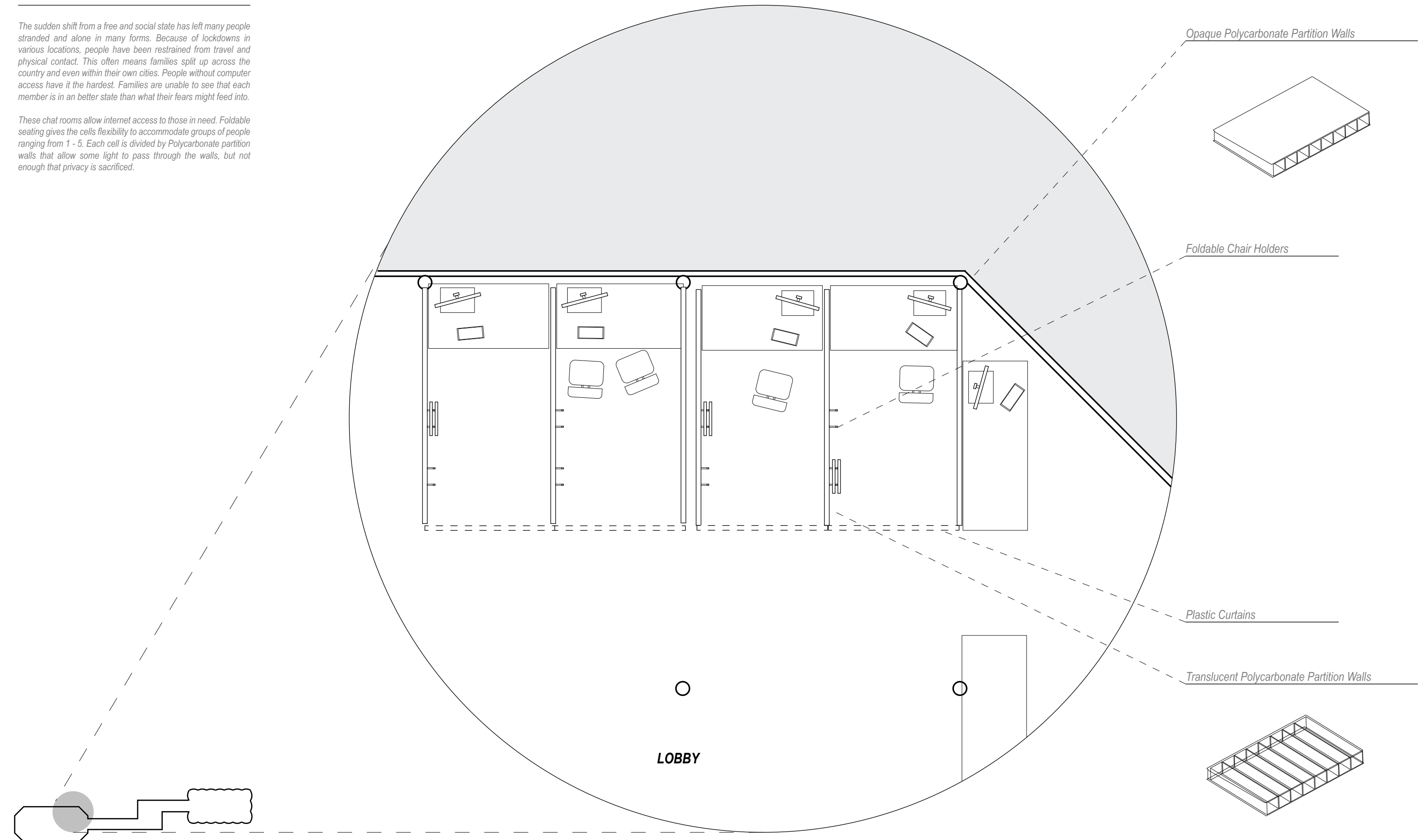




# CHAT ROOMS

The sudden shift from a free and social state has left many people stranded and alone in many forms. Because of lockdowns in various locations, people have been restrained from travel and physical contact. This often means families split up across the country and even within their own cities. People without computer access have it the hardest. Families are unable to see that each member is in a better state than what their fears might feed into.

These chat rooms allow internet access to those in need. Foldable seating gives the cells flexibility to accommodate groups of people ranging from 1 - 5. Each cell is divided by Polycarbonate partition walls that allow some light to pass through the walls, but not enough that privacy is sacrificed.



# BOOK STORAGE

A library typically is a place where one can exist between stacks of books and delve into pools of knowledge. Our current state prevents us from inhabiting these spaces. In this new space books will be stored in a pressurized chamber where librarians can retrieve books when requested. These books will be placed under cycles of UV lights and treated so when the next user comes along infection is a low risk.

The books on these shelves are limited, based off popularity and accessibility online. The books here are there based off recorded checkouts per book and those books that have no access online.

