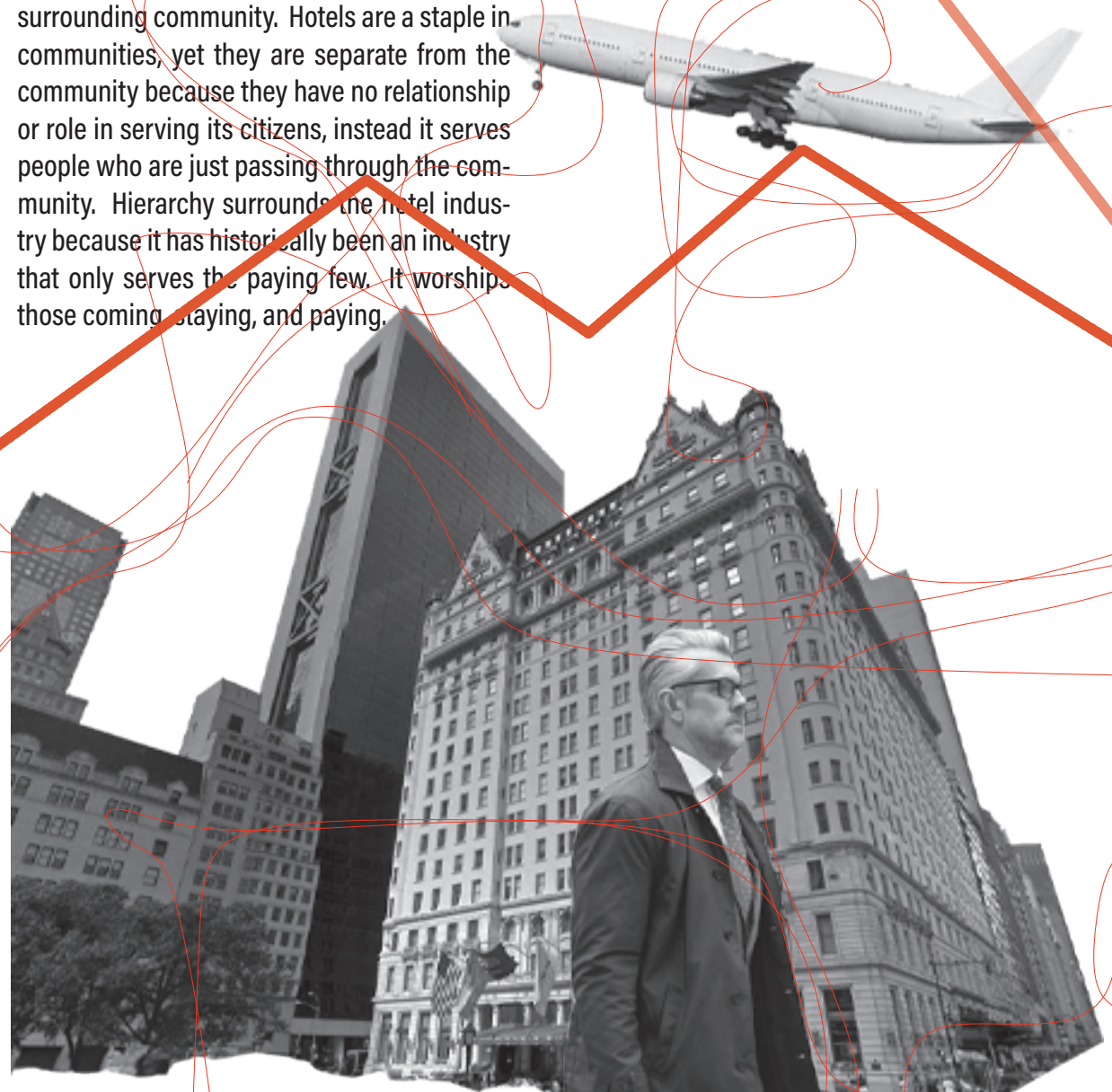


Hotels are built to mimic a home, full of amenities similar to services that a person would have in their own home or own community. Because of their role in society, hotels create a dynamic and complicated relationship between public and private space, not only to those within the hotel, but those in the surrounding community. Hotels are a staple in communities, yet they are separate from the community because they have no relationship or role in serving its citizens, instead it serves people who are just passing through the community. Hierarchy surrounds the hotel industry because it has historically been an industry that only serves the paying few. It worships those coming, staying, and paying.



NO PARKING
CAB
STAND
←



During the Covid 19 pandemic the hotel industry has been hit hard losing billions of dollars in revenue during the lockdown, but in the midst of it all many hotels have graciously given up their buildings to house essential workers, the homeless, or other individuals isolating themselves, proving their value and commitment to the community.



SO WHY CAN'T HOTELS ALWAYS SERVE THEIR COMMUNITY?



Hotels have amenities such as gyms, pools, breakfast, access to wi-fi and computers to name a few, but above all they cater to people. If community members could use hotel amenities in return for a small compensation to the hotel, it can benefit workers, guests, and community members by providing social and tangible services while building relationships across all these groups of people through the creation of an inviting space to collaborate and engage.

Typical Hotel Lobby Circulation

A hotel consists of 3 main groups of people: the paying guests, the hotel employees, and members of the community who could occasionally stop in. Historically, the guest holds the most power in the role of hotels because they are paying for the services, and have free range to all amenities within the hotel. Employees of the hotel work to serve the guest first and foremost. They are not seen benefiting from the amenities and tend to stay to their respective areas of expertise. Finally, the public rarely wanders through a hotel unless there is a hosted event or invitation into the hotel.

Cathy and Chris from the Community

The couple lives close to the hotel, and sometimes stop in to buy a drink at the bar. They only sit at the bar and enter through the main entrance because beyond that they feel invasive to the paying guests or workers.

Carlton the Concierge

He is in control of the lobby and guest satisfaction. He manuevers all around the first floor tending to guests and making sure his employees are on track.

Gigi the Guest

She is a businesswoman staying in the hotel for a conference. When she is not in meetings she spends time working or trying to socialize in the open lobby spaces or at the bar.

Visitors Vance and daughter Virginia

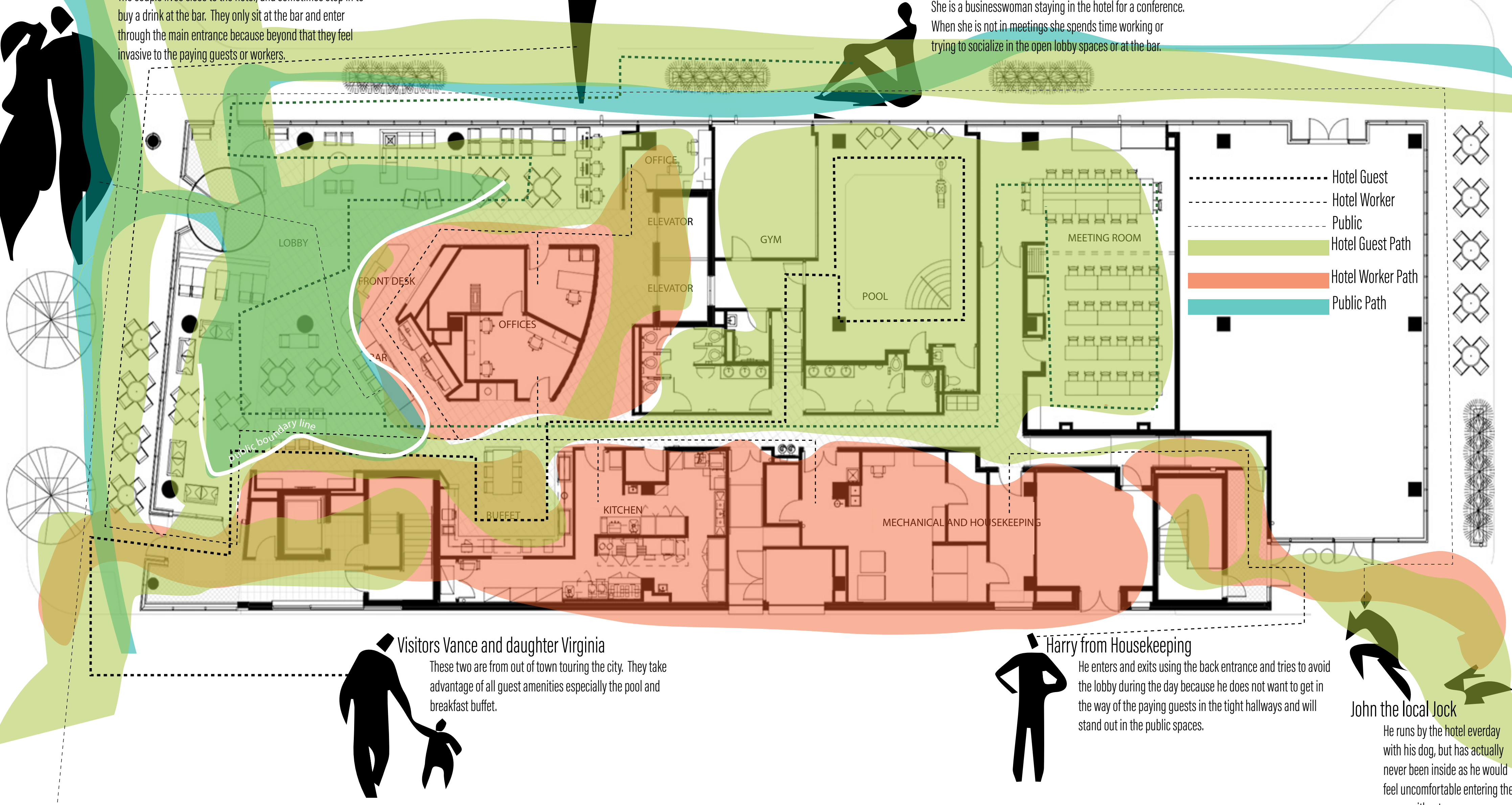
These two are from out of town touring the city. They take advantage of all guest amenities especially the pool and breakfast buffet.

Harry from Housekeeping

He enters and exits using the back entrance and tries to avoid the lobby during the day because he does not want to get in the way of the paying guests in the tight hallways and will stand out in the public spaces.

John the local Jock

He runs by the hotel everyday with his dog, but has actually never been inside as he would feel uncomfortable entering the space without a reason or invitation. Besides, the doors look locked and private.



The Architecture

If the relationship between hotel guests, hotel workers, and the citizens were better engaged the role of hotel could shift to serve more than a physical space. It can become a social infrastructure that will benefit communities surrounding the hotel by using their amenities to encourage activities, clubs, or events. Consequently, in times of economic struggle the community can keep hotels on their feet and keep the employees working. Additionally, visitors will view an engaged community within the hotel boundaries as an added amenity as they are providing a sense of community, connection, and entertainment far from home.

Activity Hub

Host events and start clubs that engage the community again. These socials will build relationships that create a purpose for individuals to become an engaged citizen within their community. At the same time it creates an additional amenity for the paying guests.

All entrances are main entrances

Creating multiple entrances on each side of the building brings the sidewalk inside encouraging the public to cross through the building as a quicker path or encouraging engagement with the happenings inside. More entrances and exits obscures who is "supposed" to be using which door.

Make amenities public

Allow for public use of amenities such as the pool, gym, computers, etc. during typical business hours during the day for a compensation fee, while guests have free access 24 hours. The public spaces would be accessible for more hours, but the amenities would be reserved for the paying guests. This could all be regulated via access cards that swipe in and out of amenities dependent on the time of day.

Extended Sidewalk

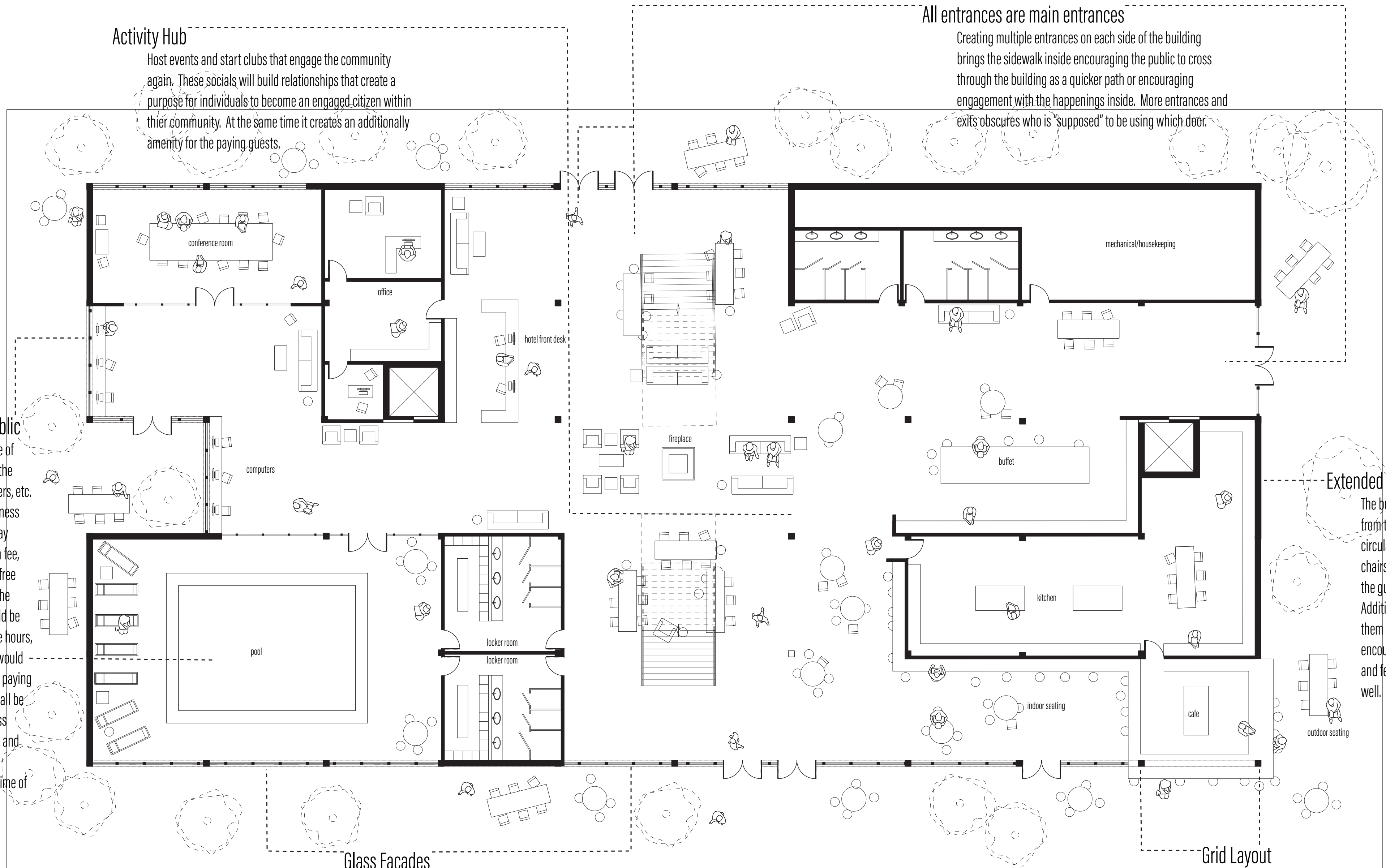
The building is set back an extra 12' from the sidewalk to allow for optimal circulation on all sides. Tables and chairs can be placed outside to engage the guests and the public. Additionally, an individual establishing themselves on the perimeter encourages them to enter the space and feel a sense of belonging within as well.

Glass Facades

All entrances use operable glass windows allowing them to be open and create natural ventilation and circulation throughout the ground floor. Natural ventilation eliminates germs circulating on surfaces and in the air. Additionally, glass allows people to see in and out engaging the opposing environment to become one.

Grid Layout

A timber structure in a 20' by 20' layout creates versatility within the structure. It can house individual rooms, but also create open spaces with the absence of walls. The grid also creates subtle pathways that guide the circulation while not creating restrictions. The spaces within, around, and underneath the grid layout creates can be open or private. This open layout allows for people to distance themselves safely while still moving through an engaging space.



Cathy and Chris from the Community

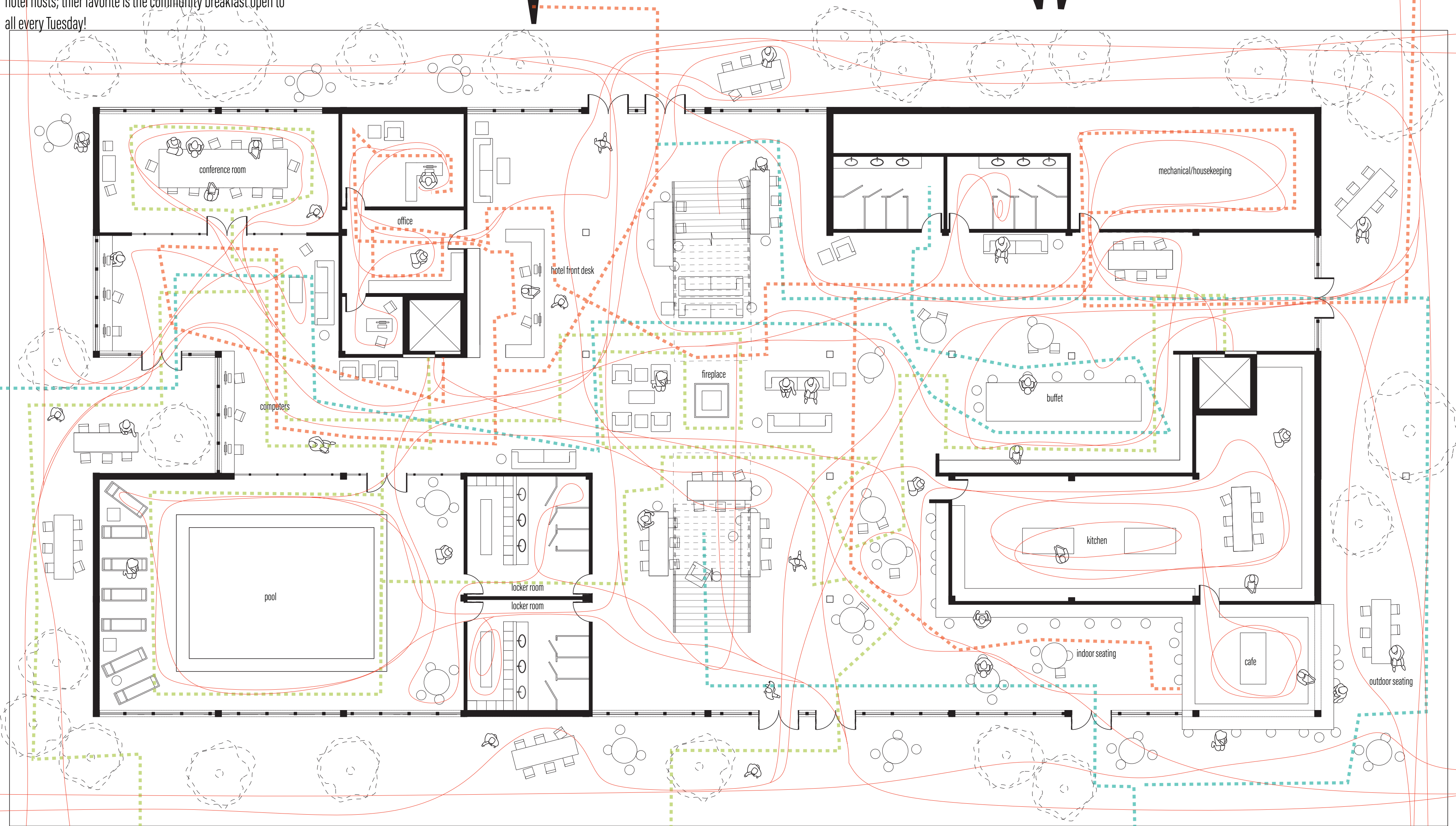
The couple lives close to the hotel, and in the past would only stop in for the occasional drink at the bar. The new layout invites them in with the use of large glass facades and exciting activities within. They commonly spend mornings or afternoons participating in the scheduled events that the hotel hosts; their favorite is the community breakfast open to all every Tuesday!

Carlton the Concierge

He is in control of the lobby and guest satisfaction. He maneuvers all around the first floor tending to guests and making sure his employees are on track, and with a wide open layout it is easier to survey the action of all. To his delight, the community engagement has increased business substantially.

Harry from Housekeeping

Harry used to try to avoid the guest spaces as to not get in their way, but with the more open layout it is easier for him to move around the hotel within feeling like a burden. This has allowed him to build better relationships with the guests and community members that inhabit the space.



Visitors Vance and daughter Virginia

These two are from out of town touring the city. They take advantage of all guest amenities especially the pool and breakfast buffet. Since the pool is open for public use during business hours Virginia has more kids her age to play with in the pool while her dad gets recommendations about local attractions or restaurants from the other parents.

Gigi the Guest

She is a businesswoman staying in the hotel for a conference. When she is not in meetings she spends time working or trying to socialize in the open lobby spaces or at the bar. The dynamic relationship that this hotel has created within its community allows Gigi to meet people beyond who she works with, ultimately establishing strong connections in a whole different city. She is excited to return!

John the local Jock

Before John never felt welcome to enter the space because the entrances were secluded, but now John usually stops for a coffee at the cafe at the end of his run where he meets up with other local runners or dog owners. Since establishing himself as a regular, he will even use the indoor gym when it is rainy outside, and has now become comfortable in the open indoor spaces.

- Hotel Guest
- Hotel Worker
- Public

Courtyard (but not by Marriott)

Creating a versatile structure that allows for isolated and private spaces as well as large, shared spaces is important for post-pandemic architecture. Spaces need to be adaptable, so they can serve society through disasters. A cross-laminated timber structure is strong, easy to construct, and relatively adaptable. Within the grid CLT structure, the creation of roof-top terraces, outdoor access, and large operable ventilation through cutouts and setbacks in the structure, natural circulation in and through the building can help free the air of germs and encourage vigorous mixing. The open first-floor lobby space uses large operable glass windows that allow for air flow. Additionally, the glass facades blur the boundaries between indoor and outdoor space. The structure of the building creates a courtyard or continuation of the sidewalk that encourages movement in, out, and through the building and natural environment.

