

INTERCONNECTED
SEPARATION

Project Description

The COVID-19 pandemic has had a large impact on daily lives. People are faced with isolation and new learning and living strategies. We have to be more cognizant about how we interact with one another, sanitizing, and obtaining daily objects such as groceries and mail. Human interaction is limited, yet that is what architecture focuses on; creating spaces that bring people together. The pandemic has raised numerous questions about how we go about our daily lives. Due to these dramatic changes, we need to address new design ideas that can be implemented in the living environment. How will individuals be separated, yet together? How will they conduct their normal lives and prevent the spread of disease?

Interconnected Separation will address these challenges in a living environment. The main form of the building is based off of modular building systems, and it is organized on a grid of bays that are 20'x20'. Through this use of a modular system, the units are organized around a central space, which creates natural ventilation. Introduction to outside air maintains healthier environments and dilutes the passage of airborne elements. Each unit has its own elevator shaft and stairwell, eliminating high risk public areas. These means of egress are constructed out of materials that are able to be thoroughly sanitized regularly.

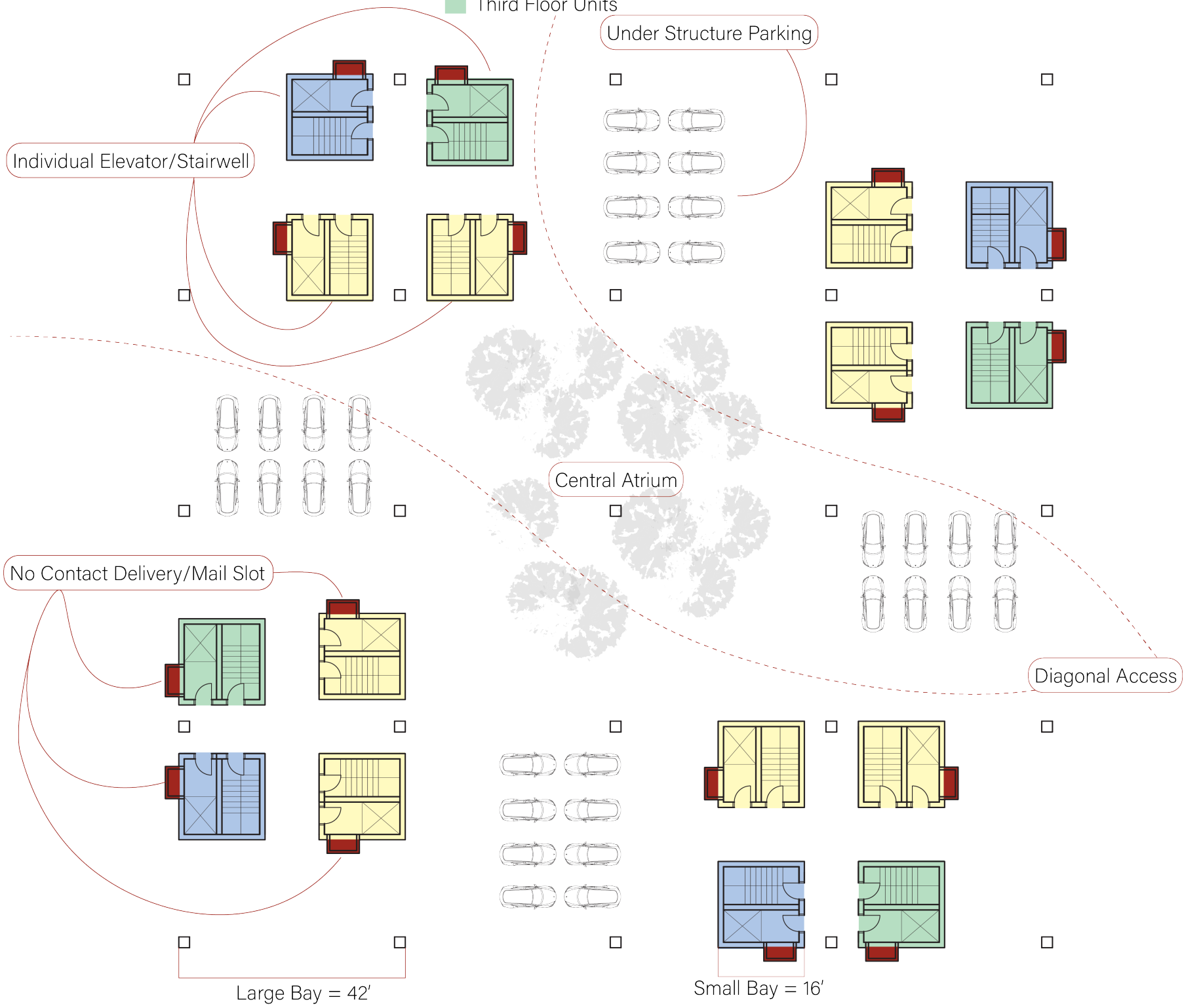
Outdoor spaces are integrated throughout the project, as the modular design separates individuals but allows for interaction through access to rooftop gardens. Each rooftop garden is at a different height so people can remain at a healthy distance from one another.

To reduce the spread of COVID-19, Interconnected Separation focuses on creating healthy living conditions by integrating natural ventilation, vegetation, and implementing unit-specific means of egress. The project also promotes human interaction through the non-contact method of staggered rooftop gardens.

Ground Plan

1/16" = 1'-0"

- First Floor Units
- Second Floor Units
- Third Floor Units



First Plan

1/16" = 1'-0"

- First Floor Units
- Second Floor Units
- Third Floor Units



Second Plan

1/16" = 1'-0"

Bath

Bedroom

First Floor Units

Second Floor Units

Third Floor Units

Kitchen

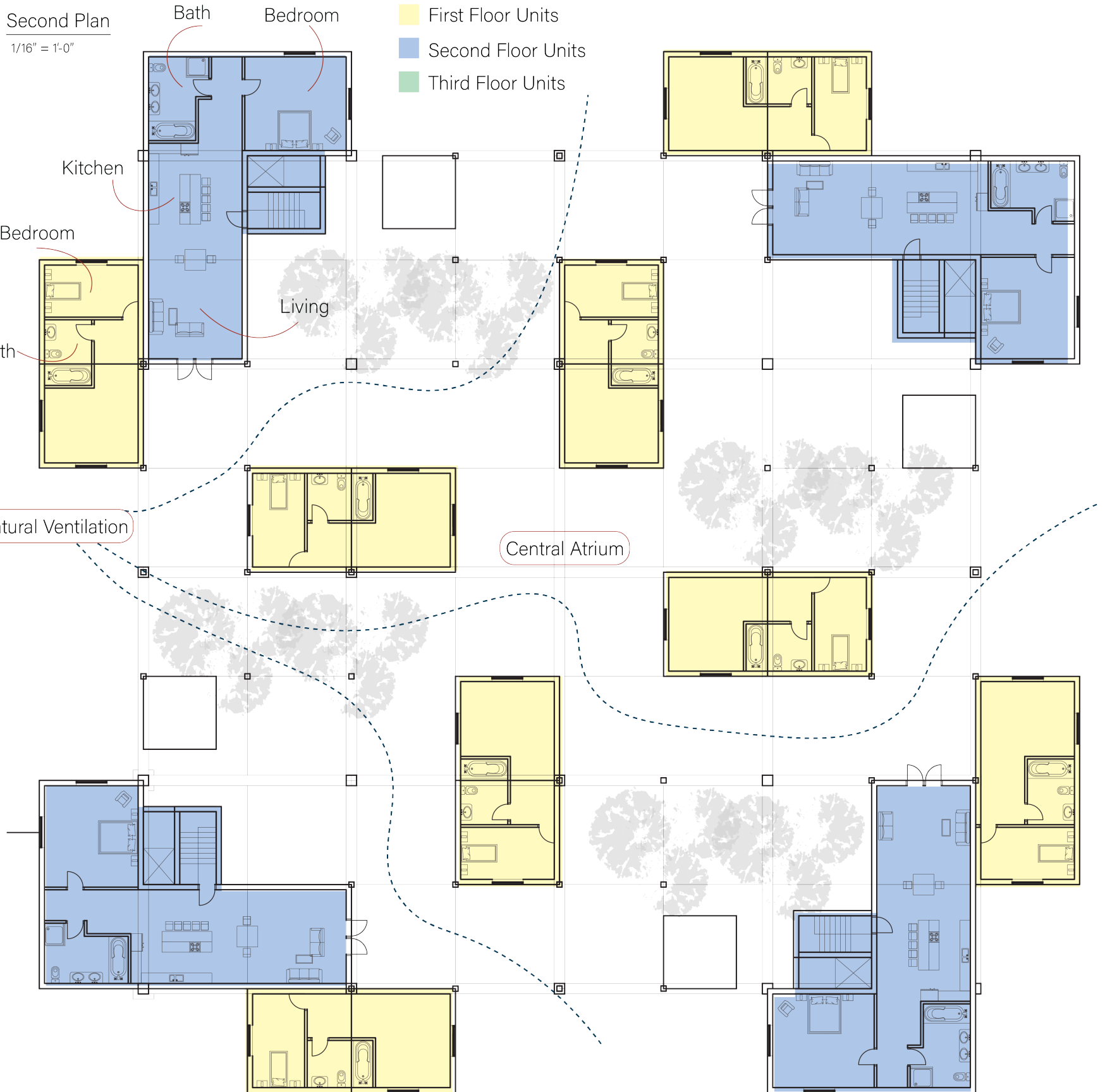
Bedroom

Living

Bath

Natural Ventilation

Central Atrium



Fourth Plan

1/16" = 1'-0"

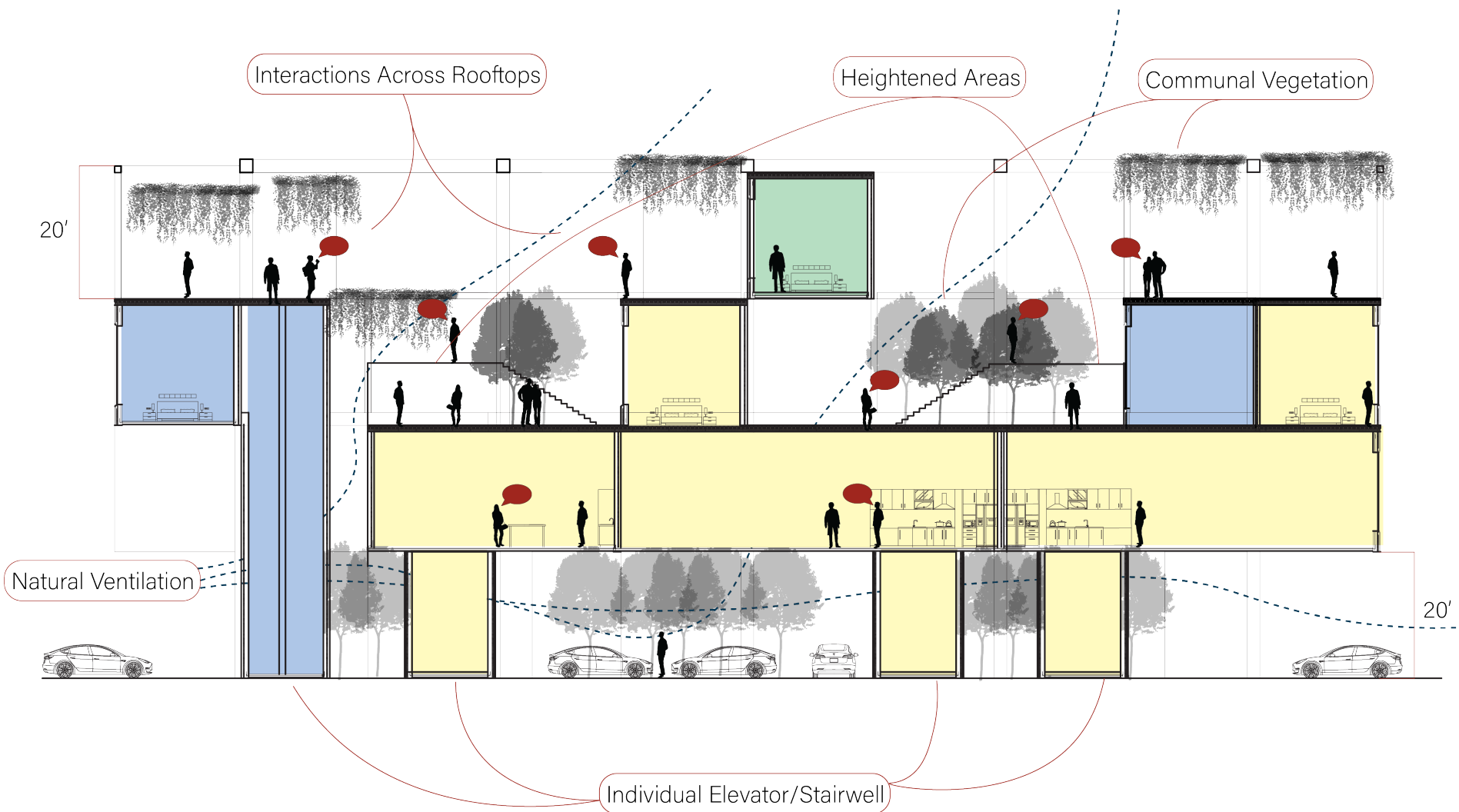
- First Floor Units
- Second Floor Units
- Third Floor Units



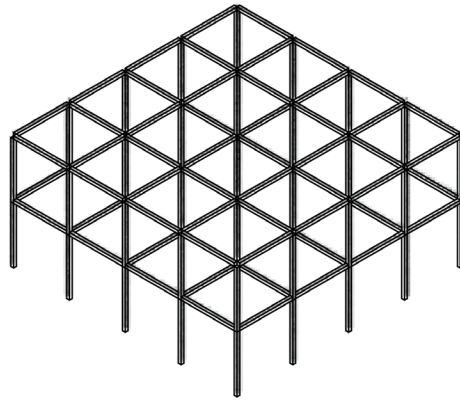
Section

1/16" = 1'-0"

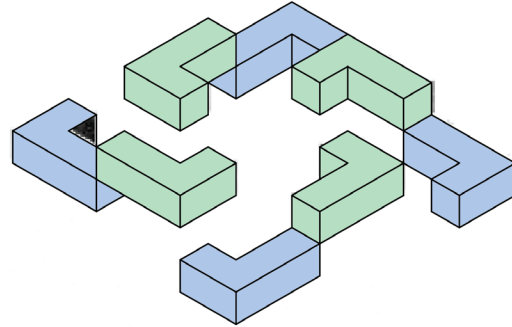
Access to rooftops encourages interactions at a distance. On specific rooftops, there are several covered spaces, which creates more private areas. There are also heightened areas to bring individuals closer for longer interactions.



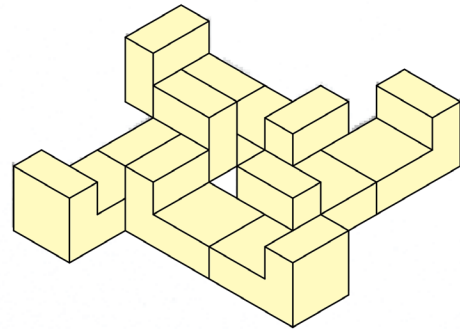
Exploded Axon
NTS



Blue Units



Green Units



Yellow Units

Individual Elevator/Stairwells

